

**KNOXVILLE
SOUTH WATERFRONT
PUBLIC IMPROVEMENTS**

KNOXVILLE, TENNESSEE

Lead Consultant



ASSOCIATES

118 MADISON PIKE
CAMDEN, MA 02139
817.444.0000
HARRIS@JBR.COM

Masterplan Overview/Urban Design
Chen Kogut, Senior
Cambridge, MA 02138
Tel: 617.354.5315

Masterplan Overview/Transportation
Gilling Jackson
Orlando, FL 32801
Tel: 407.843.6552

Marine Engineering
Mollett & Noland
Raleigh, NC 27609
Tel: 919.781.4626

Lighting Design
Luna Partners
Cambridge, MA 02142
Tel: 617.354.4502

Landscape Architecture
Royal Foster
Knoxville, TN 37902
Tel: 865.837.1100

Benfield Riches
Knoxville, TN 37902
Tel: 865.837.7009

Civil Engineers
Carson & Cannon
Knoxville, TN 37922
Tel: 865.870.8555

Wilbur Smith
1100 Mason Street, Suite 200
Knoxville, TN 37902
Tel: 865.953.4300

**NOT FOR
CONSTRUCTION**

02 Final SD package	06.04.08
04 Draft SD package	12.21.07
07 In progress	11.13.07
08 In progress	10.23.07
09 In progress	09.24.07
02 In progress	07.23.07
01 In progress	07.17.07
Issue	06.12.07



0 25 50 FT

JOB NO. HANSW 0701

Scale 1"=50'

Date 4 June 2008

Title SCHEMATIC DESIGN

PROJECT 6 SEVIER AVENUE & COUNCIL

PLACE IMPROVEMENTS

Sheet No. P8.L 101



**KNOXVILLE
SOUTH WATERFRONT
PUBLIC IMPROVEMENTS**

KNOXVILLE, TENNESSEE

Lead Consultant

**HERBERT
ASSOCIATES**

100 MARKET AVENUE
KNOXVILLE, TN 37902
615.661.0000
615.661.0000
615.661.0000

Masterplan Overview/Urban Design
Cham Knight/Shepleaf
6 Shady Street, 02138
Tel: 617.354.1315

Masterplan Overview/Transportation
Clayton Jackson
East Pine Street
Tel: 407.443.6552

Master Engineering
Kirkland & Nichol
1818 East Main Street, Suite 100
Tel: 615.731.4200

Lighting Design
Lum Partners
84 Sherman Street
Tel: 617.554.4522

Landscaping Architecture
Broad/Fowler
625 Gay Street
Tel: 615.257.1000

Structural/Architect
Brennwald/Richard
518 Union Avenue
Tel: 615.257.1000

Civil Engineers
9724 Kingston Pike, Suite 110
Tel: 615.257.1000

Willow Smith
Knoxville, TN 37921
Tel: 865.983.4300

**NOT FOR
CONSTRUCTION**

Date	Description
08.04.08	Final SD package
07.11.07	Final SD package
11.11.07	In progress
10.23.07	In progress
10.22.07	In progress
10.02.07	In progress
09.04.07	In progress
07.23.07	In progress
07.17.07	In progress
06.12.07	In progress

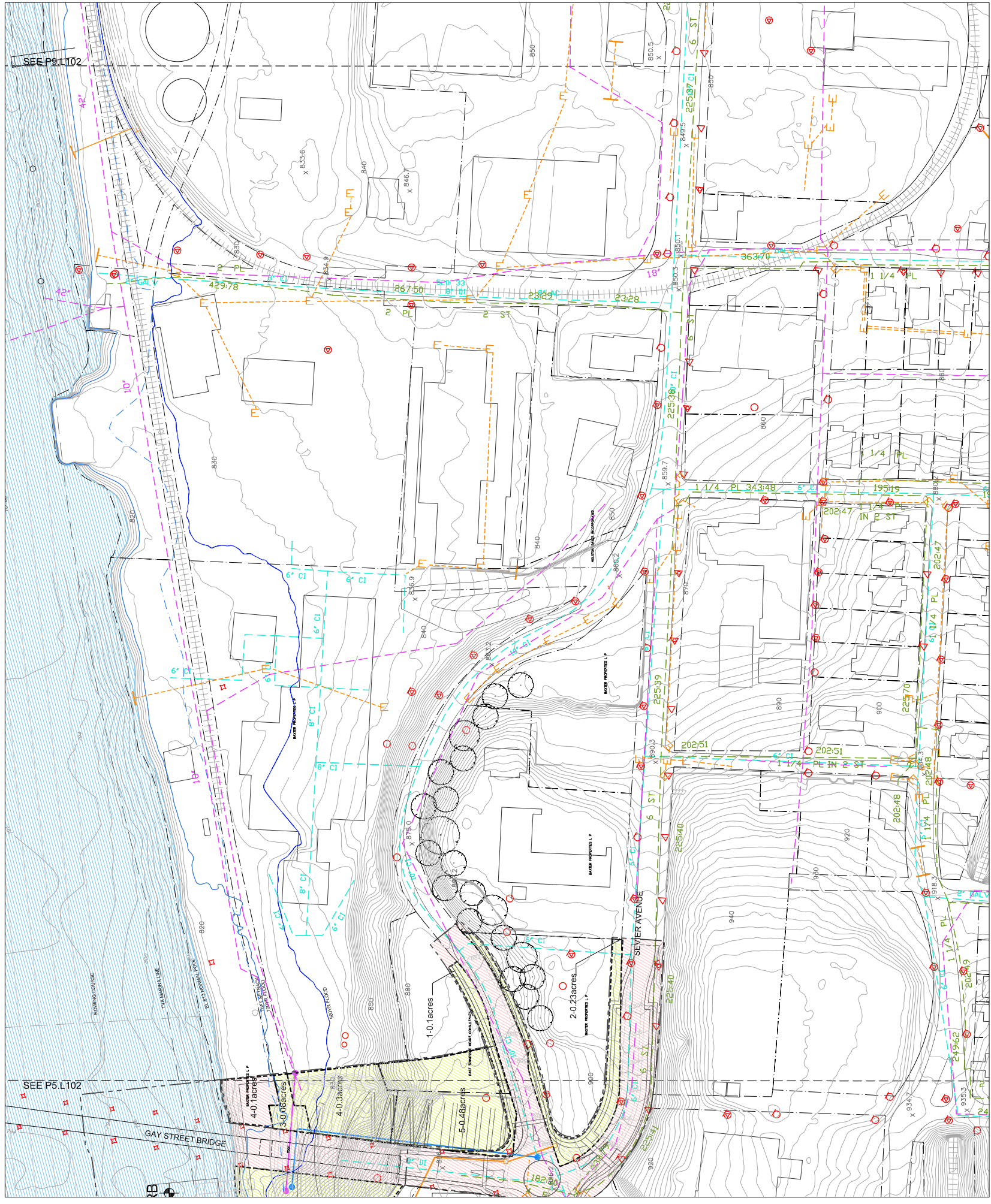
Color/Line Style	Description
Blue	EXISTING WATER
Red	PROPOSED WATER
Green	EXISTING STORM
Orange	PROPOSED STORM
Purple	EXISTING GAS
Yellow	PROPOSED GAS
Black	POWER

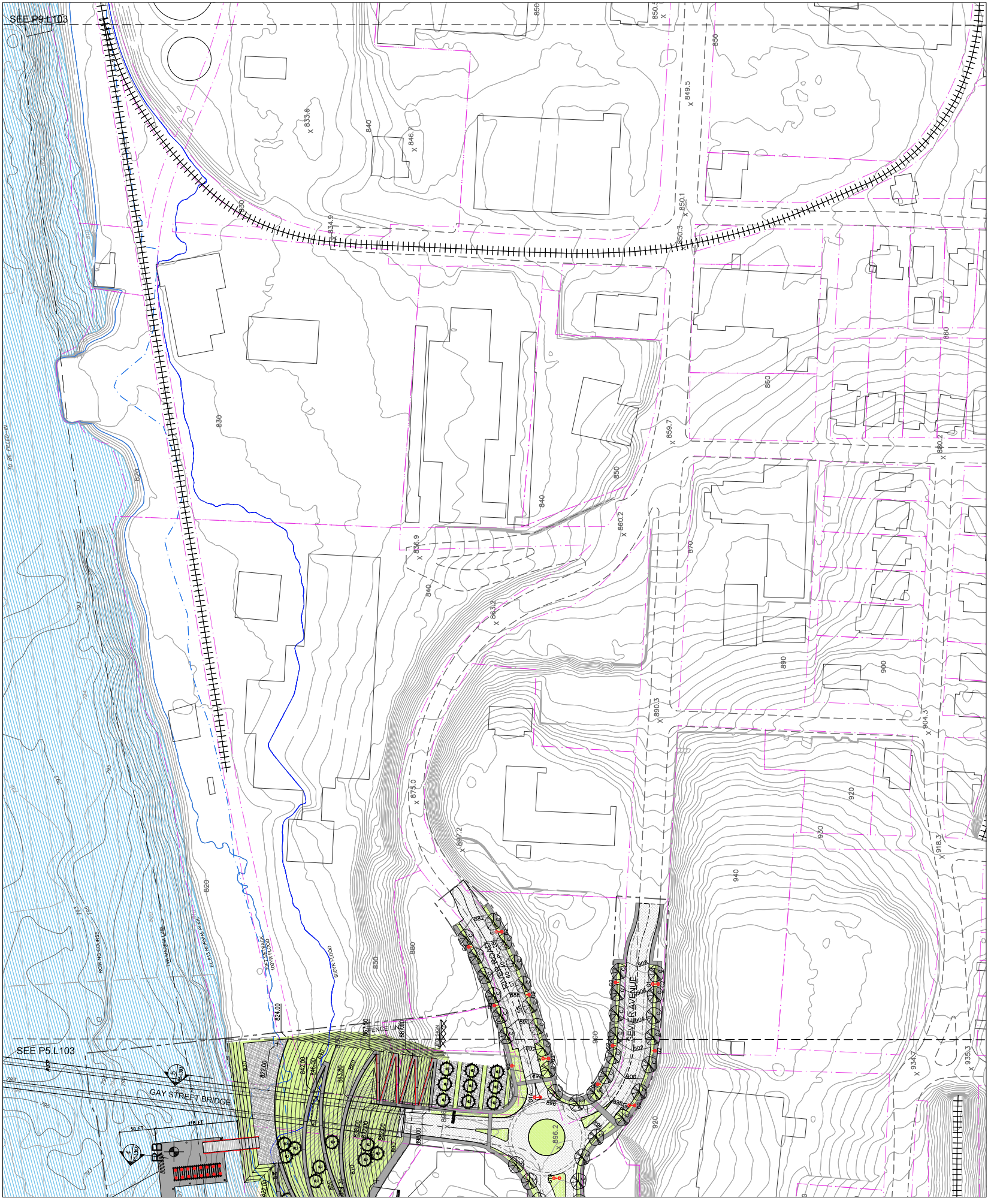
Symbol	Description
Circle with X	UTILITY POLES
Circle with 1	PHONE
Circle with 2	KUB
Circle with 3	TV ATT
Circle with 4	PH ATT
Circle with 5	PH ATT
Circle with 6	PH ATT
Circle with 7	PH ATT
Circle with 8	PH ATT
Circle with 9	PH ATT
Circle with 10	PH ATT
Circle with 11	PH ATT
Circle with 12	PH ATT
Circle with 13	PH ATT
Circle with 14	PH ATT
Circle with 15	PH ATT
Circle with 16	PH ATT
Circle with 17	PH ATT
Circle with 18	PH ATT
Circle with 19	PH ATT
Circle with 20	PH ATT
Circle with 21	PH ATT
Circle with 22	PH ATT
Circle with 23	PH ATT
Circle with 24	PH ATT
Circle with 25	PH ATT
Circle with 26	PH ATT
Circle with 27	PH ATT
Circle with 28	PH ATT
Circle with 29	PH ATT
Circle with 30	PH ATT
Circle with 31	PH ATT
Circle with 32	PH ATT
Circle with 33	PH ATT
Circle with 34	PH ATT
Circle with 35	PH ATT
Circle with 36	PH ATT
Circle with 37	PH ATT
Circle with 38	PH ATT
Circle with 39	PH ATT
Circle with 40	PH ATT
Circle with 41	PH ATT
Circle with 42	PH ATT
Circle with 43	PH ATT
Circle with 44	PH ATT
Circle with 45	PH ATT
Circle with 46	PH ATT
Circle with 47	PH ATT
Circle with 48	PH ATT
Circle with 49	PH ATT
Circle with 50	PH ATT

Symbol	Description
Circle with 1	PROPOSED BEINGS
Circle with 2	LAND
Circle with 3	DRIVER

JOB No. HANSW 0701
Scale: 1"=50'
Date: 4 June 2008

THE SCHEMATIC DESIGN
EXISTING CONDITIONS
KNOXVILLE SOUTH WATERFRONT
SERVICES AVENUE & COUNCIL
PLACE IMPROVEMENTS
Sheet No. **P8.L102**





KNOXVILLE
SOUTH WATERFRONT
PUBLIC IMPROVEMENTS

KNOXVILLE, TENNESSEE

ASSOCIATES
1130 N. UNIVERSITY AVENUE
KNOXVILLE, TN 37921
TEL: 615.557.1000
WWW.ASSOCIATES-KV.COM

Masterplan Overview/Urban Design
Chan Krueger-Schewitz
8 Story Street, Suite 100
Knoxville, TN 37902
Tel: 615.557.1000

Masterplan Overview/Transportation
Clifford Jackson
East Pine Street, Suite 100
Knoxville, TN 37902
Tel: 615.557.1000

Master Engineering
Koford & Nichol
1018 East Memorial Street, Suite 100
Knoxville, TN 37902
Tel: 615.557.1000

Lighting Design
Lum Partners
84 Sherman Street
Knoxville, TN 37902
Tel: 615.557.1000

Landscape Architecture
Rock/Fowler
625 Gay Street, Suite 100
Knoxville, TN 37902
Tel: 615.557.1000

Rock/Fowler
625 Gay Street, Suite 100
Knoxville, TN 37902
Tel: 615.557.1000

Civil Engineers
Willow Smith
9724 Kingston Pike, Suite 110
Knoxville, TN 37922
Tel: 615.557.1000

Civil Engineers
Willow Smith
9724 Kingston Pike, Suite 200
Knoxville, TN 37921
Tel: 615.557.1000

NOT FOR CONSTRUCTION

01	Final SD package	06.04.08
02	Final SD package	11.11.07
03	Final SD package	11.11.07
04	In progress	10.23.07
05	In progress	10.23.07
06	In progress	10.23.07
07	In progress	10.23.07
08	In progress	10.23.07
09	In progress	10.23.07
10	In progress	10.23.07
11	In progress	10.23.07
12	In progress	10.23.07
13	In progress	10.23.07
14	In progress	10.23.07
15	In progress	10.23.07
16	In progress	10.23.07
17	In progress	10.23.07
18	In progress	10.23.07
19	In progress	10.23.07
20	In progress	10.23.07
21	In progress	10.23.07
22	In progress	10.23.07
23	In progress	10.23.07
24	In progress	10.23.07
25	In progress	10.23.07
26	In progress	10.23.07
27	In progress	10.23.07
28	In progress	10.23.07
29	In progress	10.23.07
30	In progress	10.23.07
31	In progress	10.23.07
32	In progress	10.23.07
33	In progress	10.23.07
34	In progress	10.23.07
35	In progress	10.23.07
36	In progress	10.23.07
37	In progress	10.23.07
38	In progress	10.23.07
39	In progress	10.23.07
40	In progress	10.23.07
41	In progress	10.23.07
42	In progress	10.23.07
43	In progress	10.23.07
44	In progress	10.23.07
45	In progress	10.23.07
46	In progress	10.23.07
47	In progress	10.23.07
48	In progress	10.23.07
49	In progress	10.23.07
50	In progress	10.23.07
51	In progress	10.23.07
52	In progress	10.23.07
53	In progress	10.23.07
54	In progress	10.23.07
55	In progress	10.23.07
56	In progress	10.23.07
57	In progress	10.23.07
58	In progress	10.23.07
59	In progress	10.23.07
60	In progress	10.23.07
61	In progress	10.23.07
62	In progress	10.23.07
63	In progress	10.23.07
64	In progress	10.23.07
65	In progress	10.23.07
66	In progress	10.23.07
67	In progress	10.23.07
68	In progress	10.23.07
69	In progress	10.23.07
70	In progress	10.23.07
71	In progress	10.23.07
72	In progress	10.23.07
73	In progress	10.23.07
74	In progress	10.23.07
75	In progress	10.23.07
76	In progress	10.23.07
77	In progress	10.23.07
78	In progress	10.23.07
79	In progress	10.23.07
80	In progress	10.23.07
81	In progress	10.23.07
82	In progress	10.23.07
83	In progress	10.23.07
84	In progress	10.23.07
85	In progress	10.23.07
86	In progress	10.23.07
87	In progress	10.23.07
88	In progress	10.23.07
89	In progress	10.23.07
90	In progress	10.23.07
91	In progress	10.23.07
92	In progress	10.23.07
93	In progress	10.23.07
94	In progress	10.23.07
95	In progress	10.23.07
96	In progress	10.23.07
97	In progress	10.23.07
98	In progress	10.23.07
99	In progress	10.23.07
100	In progress	10.23.07

JOB NO. HANSH 0701
Scale: 1"=50'
Date: 4 June 2008

Title: **SCHEMATIC DESIGN**
SITE LAYOUT
SEWERAGE & COUNCIL
PLACE IMPROVEMENTS

Sheet No. **P8.L103**