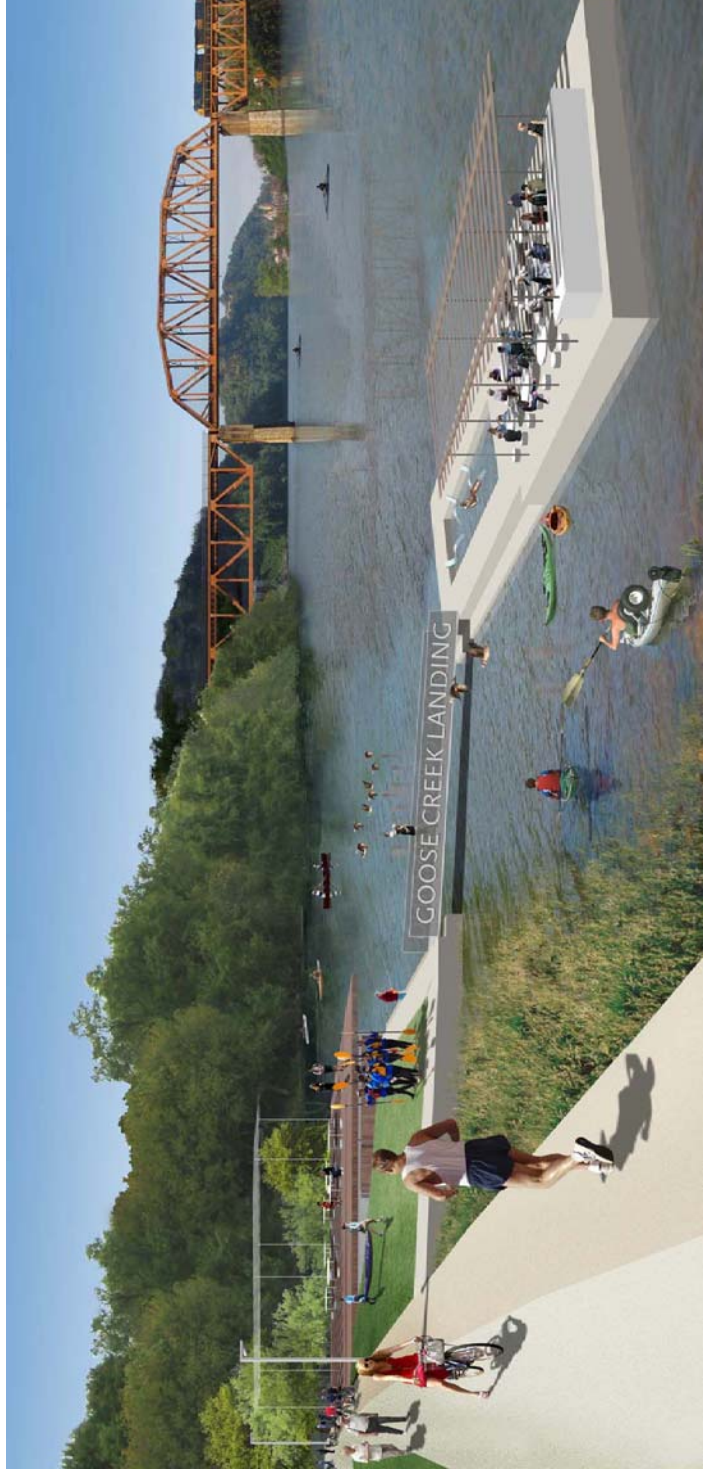


AERIAL PERSPECTIVE LOOKING TOWARD THE MOUTH OF GOOSE CREEK



GOOSE CREEK LANDING

KNOXVILLE
SOUTH WATERFRONT
PUBLIC IMPROVEMENTS

KNOXVILLE, TENNESSEE

Lead Consultant

THE HANSHU DESIGN ASSOCIATES
118 HANSHU PLAZA
CHAMBERS, VA 23041
757.533.8000
757.533.8007
HANSU@GMAIL.COM
HANSU@VA.COM

Masterplan Overview/Urban Design
Sean Kogler, Senior Architect
15 South College Street
Cambridge, MA 02138
Tel: 617.354.5315

Masterplan Overview/Transportation
Clayton Jackson
10000 E. 15th Avenue
Orlando, FL 32861
Tel: 407.843.6552

Maine Engineering
Moffitt & Nisold, 3000
Halegh, NC 27609
Tel: 919.781.4626

Lighting Design
Lynn Partners, LLC
10000 E. 15th Avenue
Orlando, FL 32861
Tel: 407.354.4502

Landscape Architecture
RosaFoster
10000 E. 15th Avenue
Orlando, FL 32861
Tel: 407.354.4502

Benfield-Richards
10000 E. 15th Avenue
Orlando, FL 32861
Tel: 407.354.4502

City Engineers
Cannon & Cannon
10000 E. 15th Avenue
Orlando, FL 32861
Tel: 407.354.4502

Wilbur Smith
1100 Mason Street, Suite 200
Knoxville, TN 37902
Tel: 865.870.8555

NOT FOR CONSTRUCTION

06	Final SD package	06.04.08
08	Final SD package	12.21.07
07	In progress	11.13.07
06	In progress	10.22.07
05	In progress	10.02.07
04	In progress	09.04.07
03	In progress	07.23.07
02	In progress	07.17.07
01	In progress	06.12.07
	Issue	Date

JOB NO.: HANSU 0701
Scale: N.T.S.
Date: 04 June 2008

Title: SCHEMATIC DESIGN
ILLUSTRATIVE
PERSPECTIVES

Sheet No.: L101

**KNOXVILLE
SOUTH WATERFRONT
PUBLIC IMPROVEMENTS**

KNOXVILLE, TENNESSEE
Lead Consultant



HOK ASSOCIATES
118 MARKET PLACE
CHICAGO, IL 60601
773.598.4000
HOK.COM

Masterplan Overview/Urban Design
John Koger, Senior Architect
Cambridge, MA 02138
Tel: 617.354.5315

Masterplan Overview/Transportation
Claring Jackson
Orlando, FL 32801
Tel: 407.843.6552

Marine Engineering
Moffitt & Nield
Raleigh, NC 27609
Tel: 919.781.4626

Lighting Design
Lynn Parsons
Cambridge, MA 02142
Tel: 617.354.4502

Landscape Architecture
Rosa Foster
Knoxville, TN 37902
Tel: 865.637.1100

Benfield Richers
Knoxville, TN 37902
Tel: 865.637.7009

Civil Engineers
Cannon & Cannon
Knoxville, TN 37922
Tel: 865.670.8555

Wilbur Smith
1100 Mason Street, Suite 200
Knoxville, TN 37902
Tel: 865.863.4300

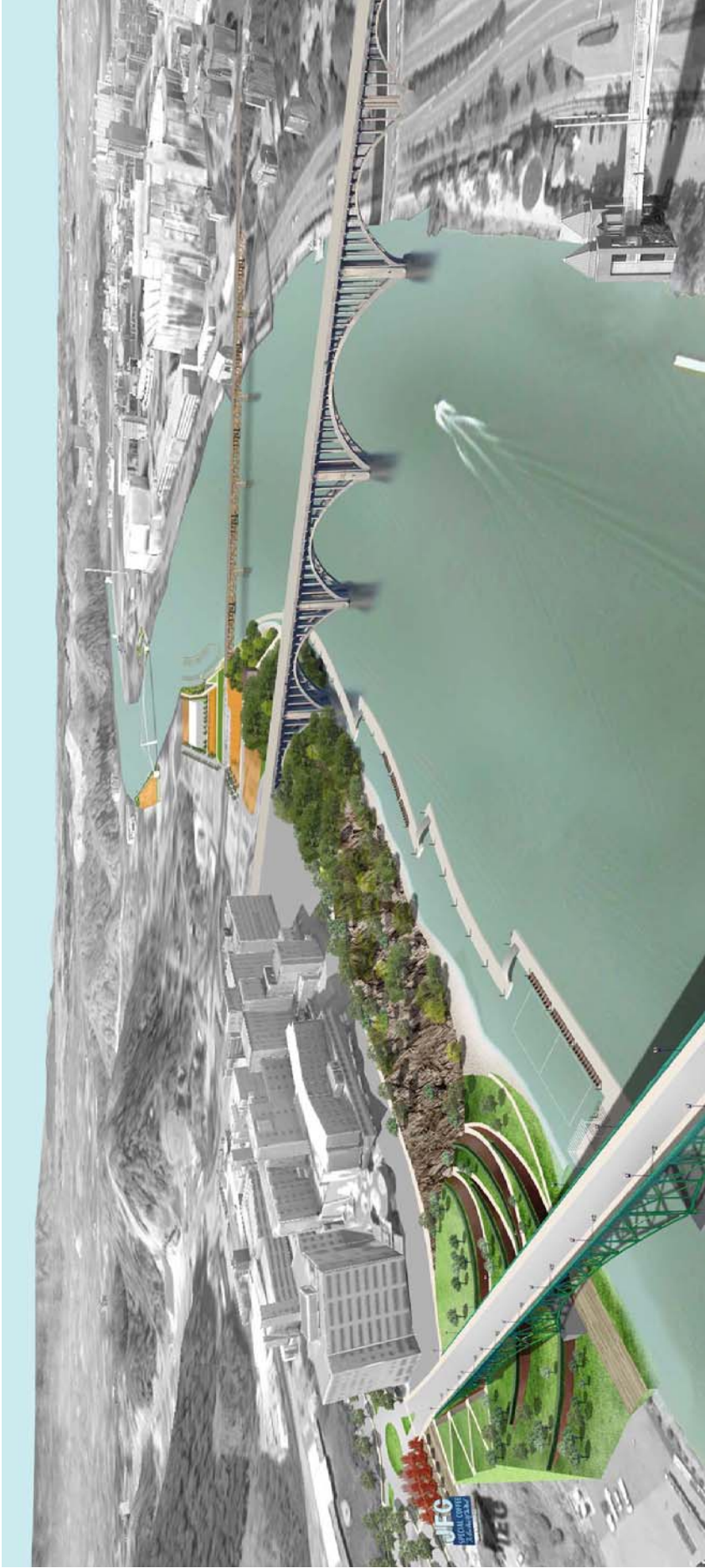
**NOT FOR
CONSTRUCTION**

06	Final SD package	06.04.08
08	Final SD package	12.21.07
07	In progress	11.13.07
05	In progress	11.02.07
04	In progress	09.04.07
03	In progress	07.23.07
02	In progress	07.17.07
01	In progress	06.12.07
	Issue	Date

Job No. HANSHV 0701
Scale N.T.S.
Date 04 June 2008

Title
**SCHEMATIC DESIGN
ILLUSTRATIVE
PERSPECTIVES**

Sheet No.
L102



AERIAL PERSPECTIVE LOOKING DOWN RIVER TOWARDS THE SHOALS RIVERWALK



SHOALS OVERLOOK AND RIVERWALK

**KNOXVILLE
SOUTH WATERFRONT
PUBLIC IMPROVEMENTS**

KNOXVILLE, TENNESSEE
Lead Consultant



HOK ASSOCIATES
118 MARKET PLACE
CHAMBERS, VA 23041
703.596.4000
HOKVA@HOK.COM
HOKVA.COM

Masterplan Overview/Urban Design
John Kogler, Senior
Cambridge, MA 02138
Tel: 617.354.5315

Masterplan Overview/Transportation
Claring Jackson
Orlando, FL 32801
Tel: 407.843.6552

Maine Engineering
Moffitt & Nield, 300 S. Main Street, Suite 100
Raleigh, NC 27609
Tel: 919.781.4626

Lighting Design
Lynn Parsons, Senior
Cambridge, MA 02140
Tel: 617.354.4502

Landscape Architecture
Rosa Foster
Knoxville, TN 37902
Tel: 865.637.1100

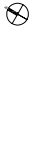
Benfield Richards
Knoxville, TN 37902
Tel: 865.637.7009

Civil Engineers
Cannon & Cannon, Scale 110
Knoxville, TN 37922
Tel: 865.670.8555

Wilbur Smith
1100 Mason Street, Suite 200
Knoxville, TN 37902
Tel: 865.963.4300

**NOT FOR
CONSTRUCTION**

08 Final SD package	06.04.08
09 Final SD package	12.21.07
10 In progress	11.13.07
11 In progress	11.22.07
12 In progress	12.02.07
13 In progress	09.04.07
14 In progress	07.29.07
15 In progress	07.17.07
16 In progress	06.12.07
Issue	Date



JOB No. HANSW 0701
Scale N.T.S.
Date 04 June 2008

Title
**SCHEMATIC DESIGN
ILLUSTRATIVE
PERSPECTIVES**

Sheet No.
L103



AERIAL PERSPECTIVE LOOKING DOWNRIVER TOWARD LINCOLN LANDING AND RIVER PLAIN PARK



RIVER PLAIN PARK ARBORETUM



THE SPRINGS WATER CENTER

**KNOXVILLE
SOUTH WATERFRONT
PUBLIC IMPROVEMENTS**

KNOXVILLE, TENNESSEE

Lead Consultant



ASSOCIATES

**118 MADISON BLVD
CHATTANOOGA, TN 37402
TEL: 615.262.4000
WWW.HOK.COM**

Masterplan Overview/Urban Design
John Kogut, Sr. Principal
5 South College
Cambridge, MA 02138
Tel: 617.354.5315

Masterplan Overview/Transportation
Claring Jackson
1000 N. W. 13th St.
Ocala, FL 32061
Tel: 407.843.6552

Maine Engineering
Moffitt & Nisold
1000 N. W. 13th St., Suite 100
Ocala, FL 32061
Tel: 352.237.1400

Lighting Design
Lynn Parsons
1000 N. W. 13th St.
Cambridge, MA 02140
Tel: 617.354.4502

Landscape Architecture
Rosa Foster
1000 N. W. 13th St.
Cambridge, MA 02140
Tel: 617.354.4502

Benfield-Richards
1000 N. W. 13th St.
Cambridge, MA 02140
Tel: 617.354.4502

Civil Engineers
Cannon & Cannon
1000 N. W. 13th St.
Cambridge, MA 02140
Tel: 617.354.4502

Willbur Smith
1100 Mason Street, Suite 200
Knoxville, TN 37902
Tel: 865.893.4300

**NOT FOR
CONSTRUCTION**

06 Final SD package	06.04.08
08 Final SP package	12.21.07
07 In progress	11.13.07
06 In progress	10.22.07
05 In progress	09.14.07
04 In progress	07.23.07
03 In progress	07.17.07
01 In progress	06.12.07
Issue	Date



Job No. HANSW 0701

Scale N.T.S.

Date 04 June 2008

Title
**SCHEMATIC DESIGN
ILLUSTRATIVE
PERSPECTIVES**

Sheet No.
L104

KNOXVILLE
SOUTH WATERFRONT
PUBLIC IMPROVEMENTS

Local Consultant



100 HICKORY AVENUE
CHATTANOOGA, TN 37403
423.249.7000
www.jacobi.com

Masterplan Overview/Urban Design
Charm Krogger-Semienowicz
6000 Shiloh Road, Suite 100
Chattanooga, TN 37412
Tel: 817.354.8315

Masterplan Overview/Transportation
Clayton Jackson
East Pine Street
Chattanooga, TN 37403
Tel: 407.843.6562

Marine Engineering
Muhait & Nichol
1616 East Millbrook Street, Suite 150
Chattanooga, TN 37403
Tel: 919.781.4629

Lighting Design
Lum Partners
84 Sherman Street
Chattanooga, TN 37403
Tel: 817.354.4562

Landscape Architecture
Robert Fowler
625 Gay Street, Suite 1002
Chattanooga, TN 37403
Tel: 865.837.1100

Benfield-Richards
516 Union Avenue
Chattanooga, TN 37402
Tel: 865.837.7000

C&E Engineers
Carmon & Carmon
9724 Kingston Pike, Suite 110
Chattanooga, TN 37403
Tel: 865.870.8595

Wilder Smith
1109 Mason Street, Suite 200
Knoxville, TN 37901
Tel: 865.859.4593

Item	Start Date	End Date
08 Final SD package	06.04.08	12.21.07
08 Final SD package	11.13.07	10.23.07
08 In progress	10.23.07	09.04.07
08 In progress	09.04.07	07.25.07
08 In progress	07.25.07	06.12.07
08 In progress	06.12.07	

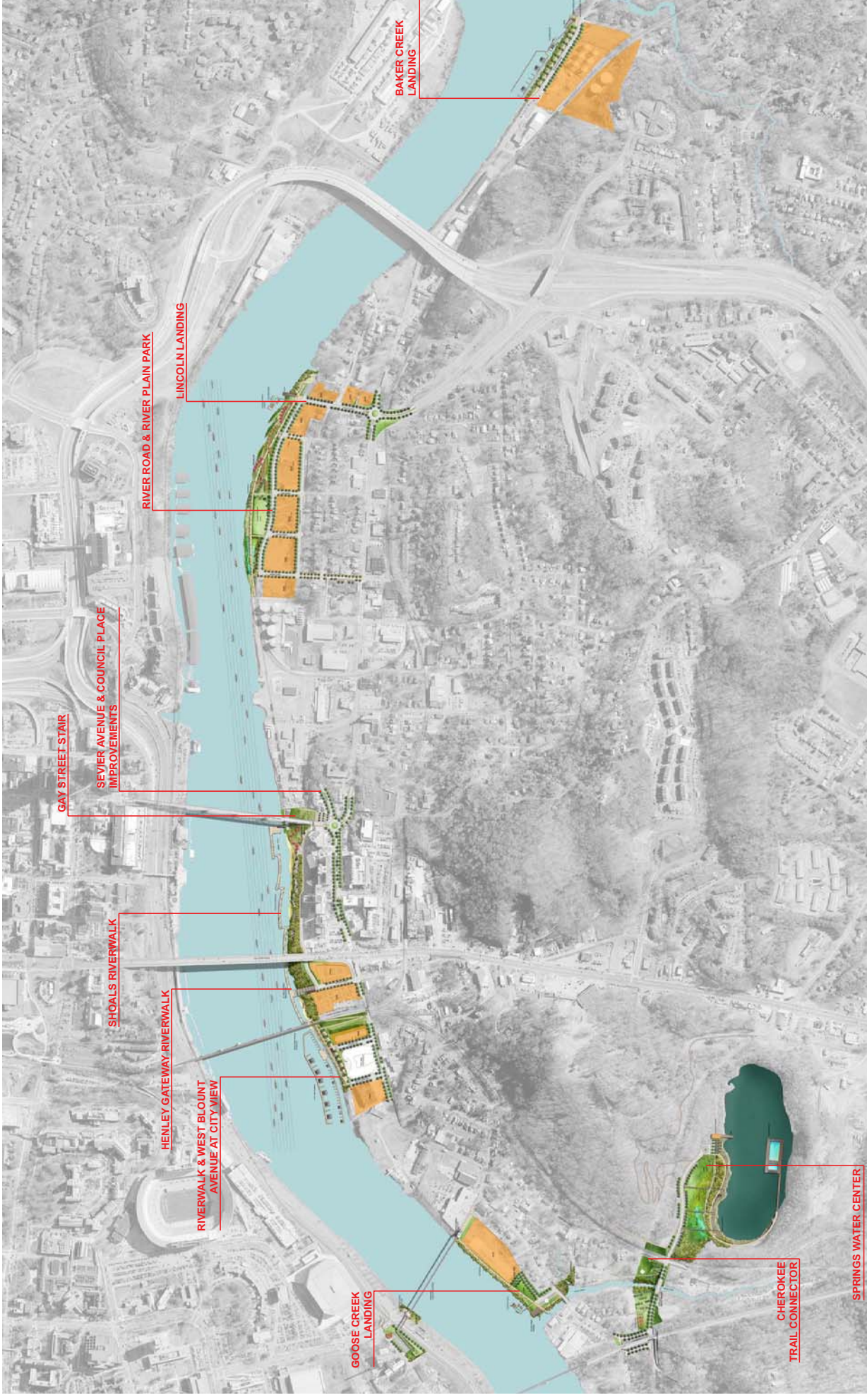
NOT FOR CONSTRUCTION



JOB NO. HANSW 0701
Scale: N.T.S.
Date: 04 June 2008

SCHEMATIC DESIGN
ILLUSTRATIVE PLAN

Sheet No. L105



KNOXVILLE
SOUTH WATERFRONT
PUBLIC IMPROVEMENTS

KNOXVILLE, TENNESSEE
Lead Consultant

1 2 3 4 5
ASSOCIATES
118 HANCOCK PLAZA
CHICAGO, IL 60601
312.467.4000
HANKS@H12345.COM

Massipain Overview/Urban Design
100 Main Street, Suite 200
Cambridge, MA 02138
Tel: 617.354.4315

Massipain Overview/Transportation
Gilling Jackson
Orlando, FL 32801
Tel: 407.843.6552

Marine Engineering
Adriani & Mical
Raleigh, NC 27609
Tel: 919.781.4256

Lighting Design
Luna Partners
Cambridge, MA 02142
Tel: 617.354.4352

Landscape Architecture
Rozell Fowler
Knoxville, TN 37902
Tel: 865.637.1100

Benfield Richens
Knoxville, TN 37902
Tel: 865.637.7009

Civil Engineers
Cannon & Cannon
Knoxville, TN 37922
Tel: 865.670.8555

William Smith
1100 Main Street, Suite 200
Knoxville, TN 37902
Tel: 865.893.4300

**NOT FOR
CONSTRUCTION**

05	Final SD package	06.04.08
06	Final SD package	12.21.07
07	In progress	11.13.07
08	In progress	10.22.07
09	In progress	09.18.07
10	In progress	07.23.07
11	In progress	07.17.07
12	In progress	06.12.07
	Issue	Date

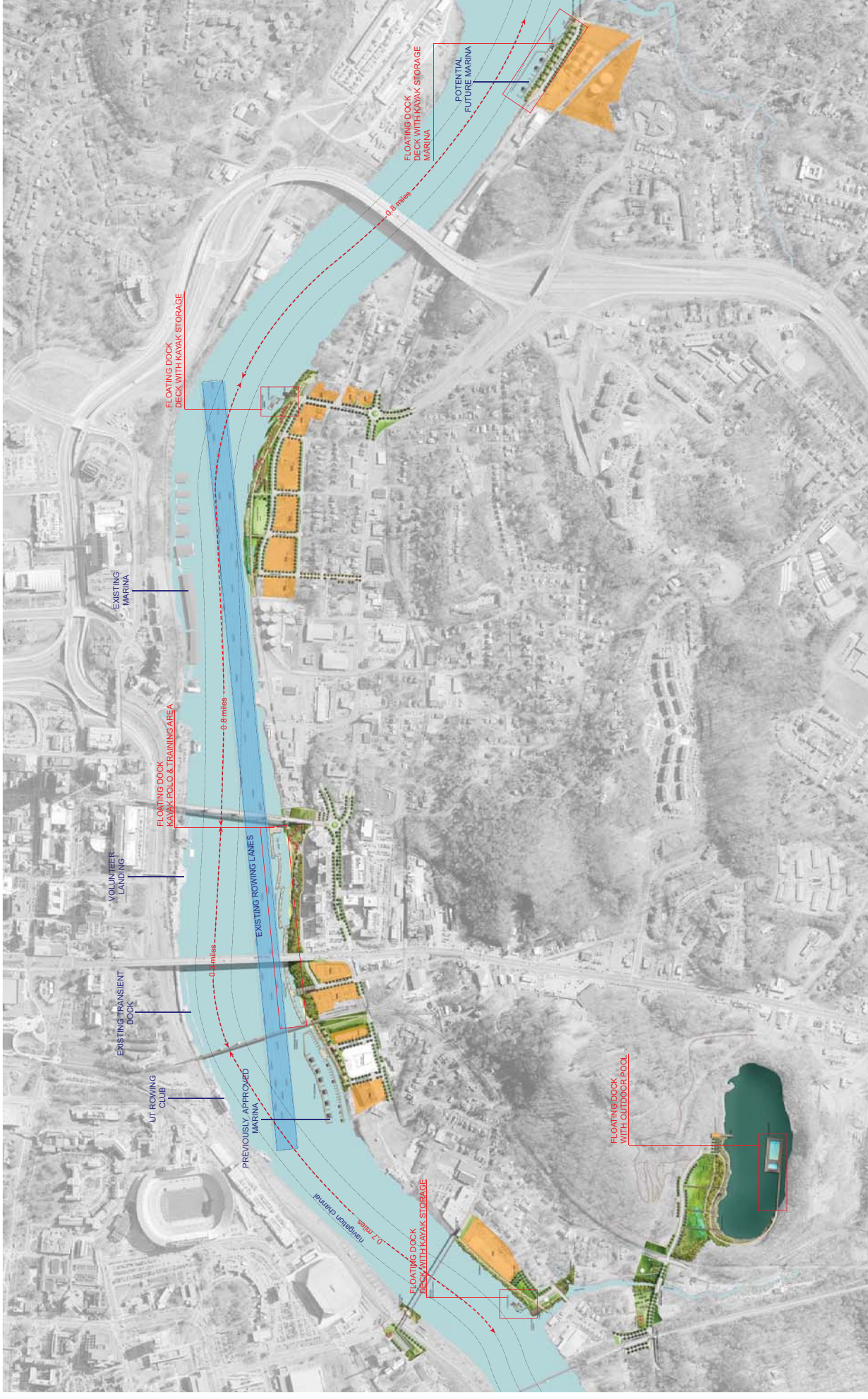
JOB NO. HANSW 0701

Scale: N 2.5

Date: 04 June 2008

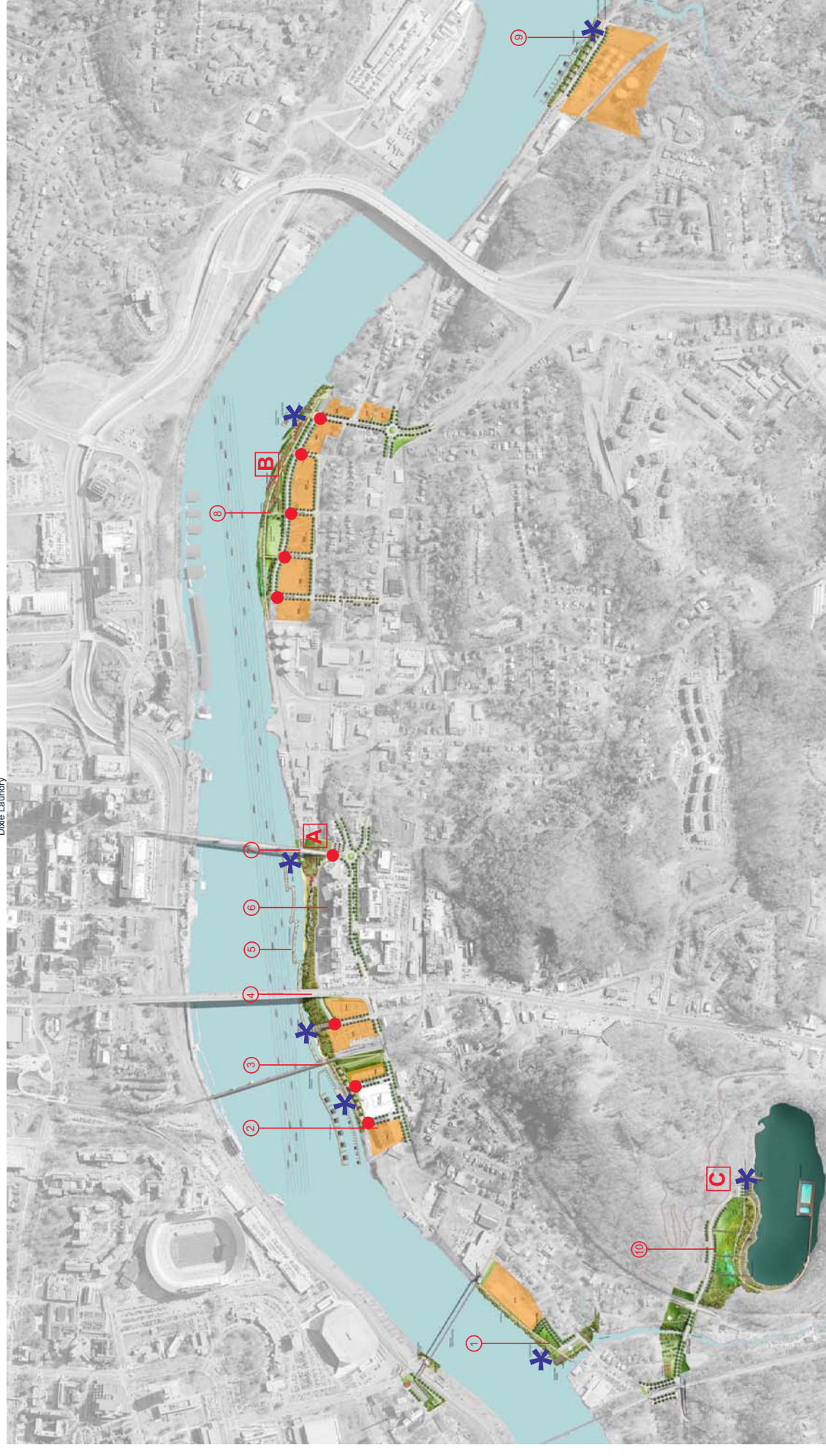
Title: SCHEMATIC DESIGN
WATER USE FACILITIES
PLAN

Sheet No. L106



INDUSTRIAL HERITAGE/HISTORIC INTERPRETATION OPPORTUNITIES

- ① Riverside/Jefferson Woolen Mill
- ② Louisville and Nashville Railroad Bridge
- ③ Knoxville Furniture Company
- ④ Knoxville Glove Factory
- ⑤ Military Pontoon Bridge 1863/Southern Railway Bridge
- ⑥ Luttrell Park c1900
- ⑦ Henley Street Bridge 1930
- ⑧ Tennessee River Shoals
- ⑨ Gay Street Bridge 1898
- ⑩ D.M. Rose Saw and Planning Mill 1885
- ⑪ Jones Livery Stables c1885
- ⑫ Jones' Race Track c1895
- ⑬ East Tennessee Packing Company
- ⑭ American Box and Crate Company
- ⑮ Dixie Laundry
- ⑯ Island Home Historic District
- ⑰ Quarry Lake/freshwater habitats



TENNESSEE RIVER

- * Signage to orientate river users
- * Sequence of signage elements located at landings & riverwalk, highlighting destinations, docking points & distances
- * e.g signage integrated into gangway, river mile markers

SOUTH WATERFRONT STREETS

- Signage to orientate riverwalk users
- Sequence of signage elements located at street intersections
- e.g brass plates embedded in pavement

GAY STREET STAIR

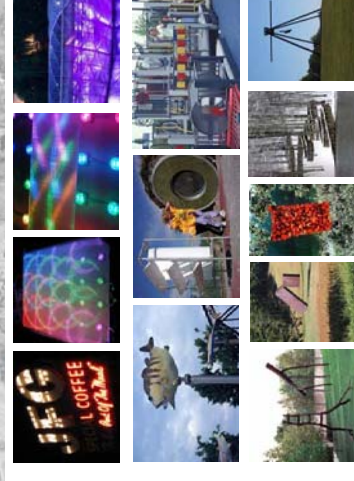
- A Site specific public art opportunity
- A Lighted installation integrated into stair structure/guardrails
- A e.g reference JFG sign

RIVERPLAIN PARK

- B Site specific public art opportunity
- B Sculpture installation integrated as part of water play space
- B e.g referencing river/floodplain or past uses of site/river

SPRINGS WATER CENTER

- C Non site specific art collection/sculpture garden/trail
- C Temporary installations/rotating exhibitions
- C Art exhibited on lawn/meadow or woodland trail
- C e.g showcasing local artists



**KNOXVILLE
SOUTH WATERFRONT
PUBLIC IMPROVEMENTS**

KNOXVILLE, TENNESSEE

Lead Consultant



HAKSWY DESIGN ASSOCIATES
111 MARKET STREET
CAMBRIDGE, MA 02139
817.451.4070
HAKSWYDESIGN.COM

Masterplan Overview/Urban Design
Chan Krieger-Sienkiewicz
1000 Market Street, Suite 200
Cambridge, MA 02139
Tel: 617.354.5315

Masterplan Overview/Transportation
Glenn Jackson
1000 Market Street, Suite 200
Cambridge, MA 02139
Tel: 617.354.5315

Masterplan Overview/Transportation
Glenn Jackson
1000 Market Street, Suite 200
Cambridge, MA 02139
Tel: 617.354.5315

Masterplan Overview/Transportation
Glenn Jackson
1000 Market Street, Suite 200
Cambridge, MA 02139
Tel: 617.354.5315

Masterplan Overview/Transportation
Glenn Jackson
1000 Market Street, Suite 200
Cambridge, MA 02139
Tel: 617.354.5315

Masterplan Overview/Transportation
Glenn Jackson
1000 Market Street, Suite 200
Cambridge, MA 02139
Tel: 617.354.5315

Masterplan Overview/Transportation
Glenn Jackson
1000 Market Street, Suite 200
Cambridge, MA 02139
Tel: 617.354.5315

Masterplan Overview/Transportation
Glenn Jackson
1000 Market Street, Suite 200
Cambridge, MA 02139
Tel: 617.354.5315

Masterplan Overview/Transportation
Glenn Jackson
1000 Market Street, Suite 200
Cambridge, MA 02139
Tel: 617.354.5315

Masterplan Overview/Transportation
Glenn Jackson
1000 Market Street, Suite 200
Cambridge, MA 02139
Tel: 617.354.5315

Masterplan Overview/Transportation
Glenn Jackson
1000 Market Street, Suite 200
Cambridge, MA 02139
Tel: 617.354.5315

Masterplan Overview/Transportation
Glenn Jackson
1000 Market Street, Suite 200
Cambridge, MA 02139
Tel: 617.354.5315

Masterplan Overview/Transportation
Glenn Jackson
1000 Market Street, Suite 200
Cambridge, MA 02139
Tel: 617.354.5315

Masterplan Overview/Transportation
Glenn Jackson
1000 Market Street, Suite 200
Cambridge, MA 02139
Tel: 617.354.5315

Masterplan Overview/Transportation
Glenn Jackson
1000 Market Street, Suite 200
Cambridge, MA 02139
Tel: 617.354.5315

Masterplan Overview/Transportation
Glenn Jackson
1000 Market Street, Suite 200
Cambridge, MA 02139
Tel: 617.354.5315

Masterplan Overview/Transportation
Glenn Jackson
1000 Market Street, Suite 200
Cambridge, MA 02139
Tel: 617.354.5315

Masterplan Overview/Transportation
Glenn Jackson
1000 Market Street, Suite 200
Cambridge, MA 02139
Tel: 617.354.5315

Masterplan Overview/Transportation
Glenn Jackson
1000 Market Street, Suite 200
Cambridge, MA 02139
Tel: 617.354.5315

Masterplan Overview/Transportation
Glenn Jackson
1000 Market Street, Suite 200
Cambridge, MA 02139
Tel: 617.354.5315

Masterplan Overview/Transportation
Glenn Jackson
1000 Market Street, Suite 200
Cambridge, MA 02139
Tel: 617.354.5315

Masterplan Overview/Transportation
Glenn Jackson
1000 Market Street, Suite 200
Cambridge, MA 02139
Tel: 617.354.5315

Masterplan Overview/Transportation
Glenn Jackson
1000 Market Street, Suite 200
Cambridge, MA 02139
Tel: 617.354.5315

NOT FOR CONSTRUCTION

Issue	Date
03 Final SD package	06.04.08
04 Draft SD package	12.21.07
07 Proposals	11.13.07
08 Proposals	10.23.07
09 Proposals	10.02.07
10 Proposals	09.04.07
11 Proposals	08.07.07
12 Proposals	07.17.07
13 Proposals	06.12.07

JOB NO. HAKSWY 0701
Scale: N.T.S.
Date: 04 June 2009

**SCHEMATIC DESIGN
SITE INTERPRETATION
& SIGNAGE PLAN**

Sheet No. **L107**

**KNOXVILLE
SOUTH WATERFRONT
PUBLIC IMPROVEMENTS**

KNOXVILLE, TENNESSEE
Lead Consultant

**THE HOK GROUP
ASSOCIATES**
118 MARKET PLACE
CHAMBERLAIN, MA 02119
781.326.4000
781.326.4004
HMA@HOK.COM

Massipain Overview/Urban Design
Chris Koger, Senior Designer
Cambridge, MA 02138
Tel: 617.354.5315

Massipain Overview/Transportation
Clayton Jackson
Orlando, FL 32801
Tel: 407.843.6552

Marine Engineering
Adriett & Nicol
Raleigh, NC 27609
Tel: 919.781.4526

Lighting Design
Lynn Parsons
Cambridge, MA 02140
Tel: 617.354.4502

Landscape Architecture
Rosa Forder
Knoxville, TN 37902
Tel: 865.637.1100

Benfield Richards
Knoxville, TN 37902
Tel: 865.637.7009

Civil Engineers
Cannon & Cannon
Knoxville, TN 37922
Tel: 865.670.8555

Wilbur Smith
1100 Mason Street, Suite 200
Knoxville, TN 37902
Tel: 865.883.4300

**NOT FOR
CONSTRUCTION**

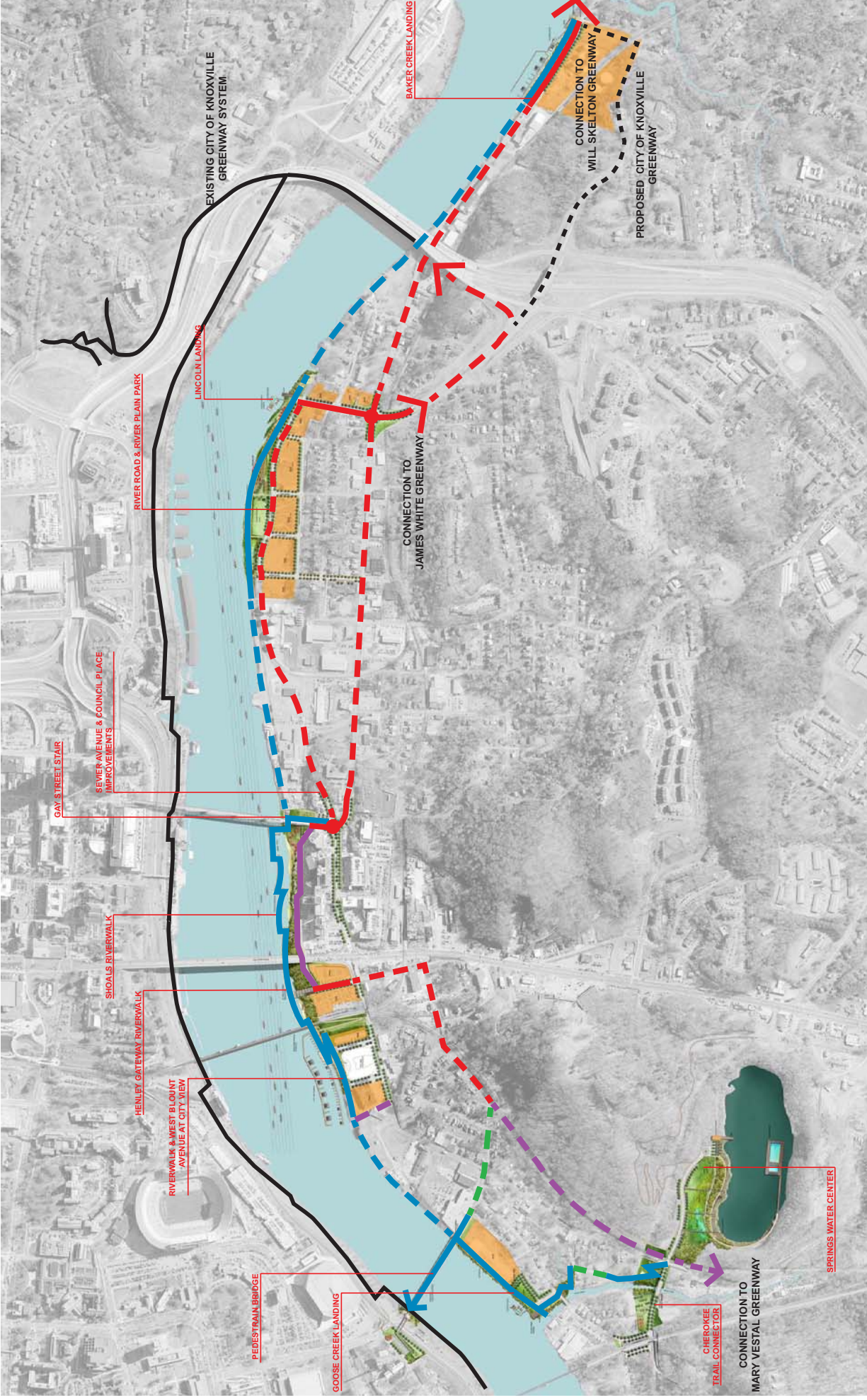
05	Final SD package	06.04.08
06	Final SD package	12.21.07
07	In progress	11.13.07
08	In progress	10.23.07
09	In progress	09.04.07
10	In progress	07.23.07
11	In progress	06.12.07
	Issue	Date



JOB NO. HAKSW 0701
Scale
Date 04 June 2008
Title

**SCHEMATIC DESIGN
CYCLE NETWORK PLAN**

Sheet No. **L108**



CYCLE NETWORK

- Phase 1 Future Phases
- RIVERWALK
 - DEDICATED CYCLE ROUTE
 - ON STREET CYCLE LANES
 - SHARED ON STREET CYCLE ROUTE

KNOXVILLE
SOUTH WATERFRONT
PUBLIC IMPROVEMENTS

Local Consultant



100 MARKET STREET
CHAMBERS, VA 23139
817.661.0090
www.jacobi.com
VA 0000000000

Masterplan Overview/Urban Design
Cham Krogger, Senior Architect
6000 Shiloh Road, Suite 100
Chambers, VA 23138
Tel: 817.354.8315

Masterplan Overview/Transportation
Clayton Jackson
East Pine Street
Chambers, VA 23138
Tel: 407.843.6562

Marine Engineering
Muhait & Nichol
1616 East Millbrook Street, Suite 150
Chambers, VA 23138
Tel: 819.781.4629

Lighting Design
Linn Partners
84 Sherman Street
Chambers, VA 23138
Tel: 817.354.4562

Landscape Architecture
Robert Fowler
625 Gay Street, Suite 1002
Chambers, VA 23138
Tel: 865.837.1100

Benfield Richers
516 Union Avenue
Chambers, VA 23138
Tel: 865.837.7000

C&E Engineers
Carroll & Carroll
8724 Kingston Pike, Suite 110
Knoxville, TN 37901
Tel: 865.670.8595

Wilder Smith
1109 Mason Street, Suite 200
Knoxville, TN 37901
Tel: 865.859.4593

**NOT FOR
CONSTRUCTION**

06 Final SD package	06.04.08
08 Final SD package	12.21.07
07 In progress	11.13.07
06 In progress	10.23.07
05 In progress	10.02.07
04 In progress	09.04.07
03 In progress	07.25.07
02 In progress	07.17.07
01 In progress	06.12.07
Issue	Date



JOB NO. HANSHW 0701

Scale N.T.S.

Date 04 June 2008

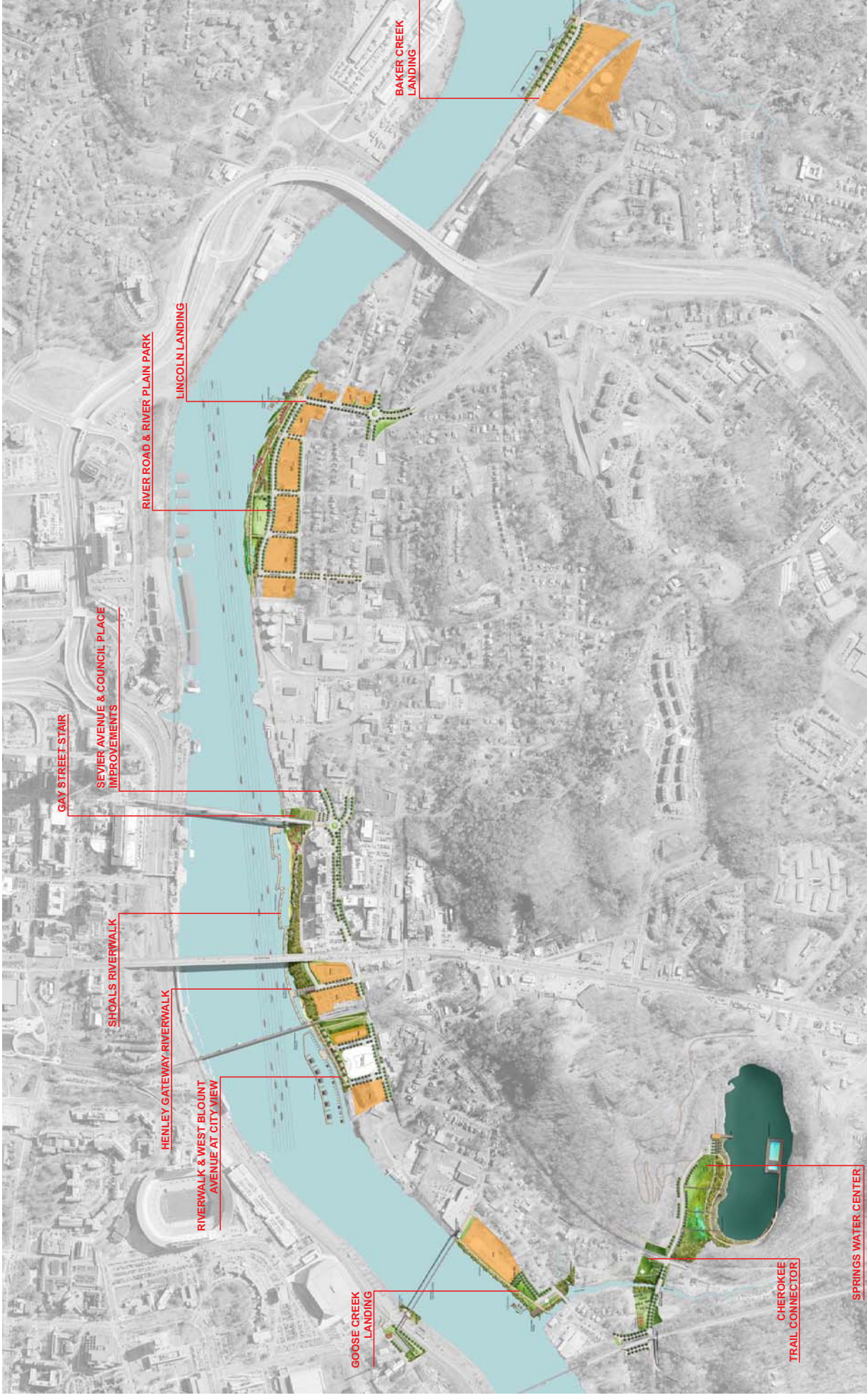
Title

SCHEMATIC DESIGN

ILLUSTRATIVE PLAN

Sheet No.

L105



**KNOXVILLE
SOUTH WATERFRONT
PUBLIC IMPROVEMENTS**

KNOXVILLE, TENNESSEE
Lead Consultant

HOK ASSOCIATES
118 MADISON STREET
CAMBRIDGE, MA 02139
TEL: 617 552 8200
WWW.HOK.COM

Masterplan, Overview/Urban Design
John Koger, Sr. Principal
Cambridge, MA 02139
Tel: 617 554 1315

Masterplan, Overview/Transportation
Charles Johnson
Orlando, FL 32801
Tel: 407 843 6552

Marine Engineering
Mollett & Neel
Raleigh, NC 27609
Tel: 919 781 4626

Landscape Architecture
Lars Parrens
Cambridge, MA 02140
Tel: 617 354 4502

Roof/Interior
Landscape Architecture
Knoxville, TN 37902
Tel: 865 537 1100

Biological/Robbers
Knoxville, TN 37902
Tel: 865 837 7009

Civil Engineers
Carmon & Cannon
Knoxville, TN 37922
Tel: 865 676 8555

Willbur Smith
1100 Mellon Street Suite 200
Knoxville, TN 37902
Tel: 865 963 4300

**NOT FOR
CONSTRUCTION**

01 Final SD package	08/04/08
02 Civil SD package	12/21/07
03 In progress	11/13/07
04 In progress	10/25/07
05 In progress	09/24/07
06 In progress	07/23/07
07 In progress	07/17/07
08 In progress	06/12/07
Issue	Date

Job No. HAKSNV.0701
Scale N.T.S.
Date 04 June 2008
Title

SCHEMATIC DESIGN
PROJECT AREAS KEY
PLAN

Sheet No. **L109**



**KNOXVILLE
SOUTH WATERFRONT
PUBLIC IMPROVEMENTS**

KNOXVILLE, TENNESSEE
Lead Consultant

1 2 3 4 5 6 7 8 9 10 11 12
ASSOCIATES
118 HANCOCK PLAZA
CHICAGO, IL 60601
312.467.4000
www.hankov.com

Massipain Overview/Urban Design
1000 Main Street, Suite 200
Cambridge, MA 02138
Tel: 617.354.4315

Massipain Overview/Transportation
Claring Jackson
Orlando, FL 32801
Tel: 407.843.6552

Marine Engineering
Adriani & Mical
Raleigh, NC 27609
Tel: 919.781.4256

Lighting Design
Luna Partners
Cambridge, MA 02142
Tel: 617.354.4352

Landscape Architecture
Rozell Fowler
Knoxville, TN 37902
Tel: 865.837.1100

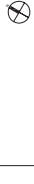
Benfield Richens
Knoxville, TN 37902
Tel: 865.837.7099

Civil Engineers
Cannon & Cannon
Knoxville, TN 37922
Tel: 865.870.8555

William Smith
1100 Main Street, Suite 200
Knoxville, TN 37902
Tel: 865.893.4390

**NOT FOR
CONSTRUCTION**

05	Final SD package	06.04.08
06	Final SD package	12.21.07
07	In progress	11.13.07
08	In progress	10.22.07
09	In progress	09.18.07
10	In progress	07.23.07
11	In progress	07.17.07
12	In progress	06.12.07
	Issue	Date



JOB NO. HANSW 0701

Scale: N 2.5

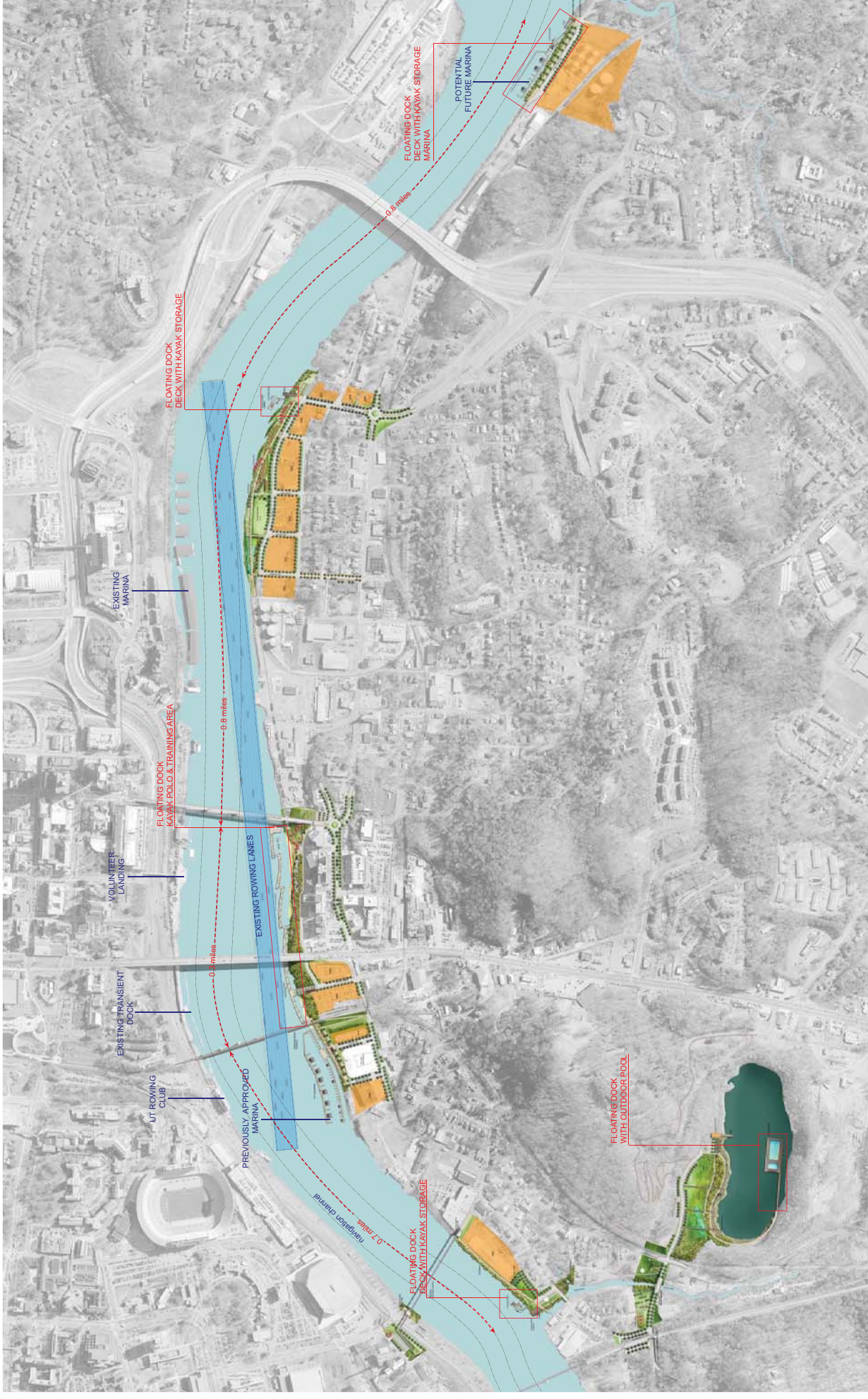
Date: 04 June 2008

Title: SCHEMATIC DESIGN

WATER USE FACILITIES

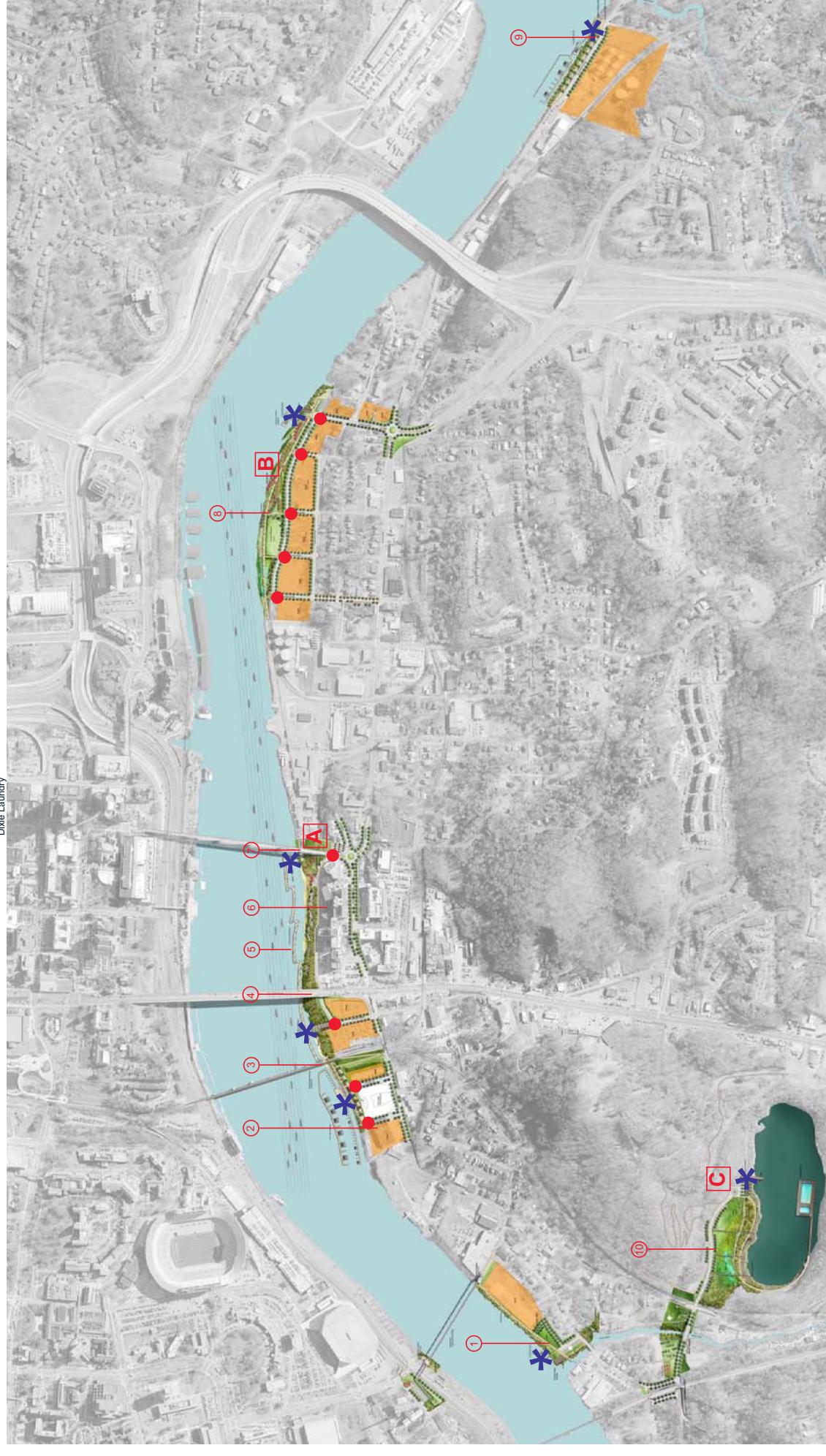
PLAN

Sheet No. L106



INDUSTRIAL HERITAGE/HISTORIC INTERPRETATION OPPORTUNITIES

- ① Riverside/Jefferson Woolen Mill
- ② Louisville and Nashville Railroad Bridge
- ③ Knoxville Furniture Company
Knoxville Glove Factory
- ④ Military Pontoon Bridge 1863/Southern Railway Bridge
- ⑤ Henley Street Bridge 1930
- ⑥ Tennessee River Shoals
Luttrell Park c1900
- ⑦ Gay Street Bridge 1898
D.M. Rose Saw and Planning Mill 1885
Jones Livery Stables c1885
- ⑧ Jones' Race Track c1895
East Tennessee Packing Company
American Box and Crate Company
Dixie Laundry
- ⑨ Island Home Historic District
- ⑩ Quarry Lake/freshwater habitats



TENNESSEE RIVER

- * Signage to orientate river users
- Sequence of signage elements located at landings & riverwalk, highlighting destinations, docking points & distances
- e.g signage integrated into gangway, river mile markers

SOUTH WATERFRONT STREETS

- Signage to orientate riverwalk users
- Sequence of signage elements located at street intersections
- e.g brass plates embedded in pavement

GAY STREET STAIR

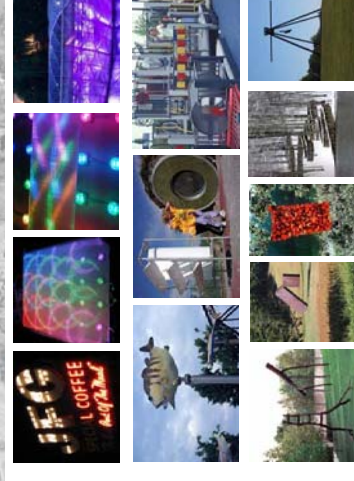
- A Site specific public art opportunity
- Lighting installation integrated into stair structure/guardrails
- e.g reference JFG sign

RIVERPLAIN PARK

- B Site specific public art opportunity
- Sculpture installation integrated as part of water play space
- e.g referencing river/floodplain or past uses of site/river

SPRINGS WATER CENTER

- C Non site specific art collection/sculpture garden/trail
- Temporary installations/rotating exhibitions
- Art exhibited on lawn/meadow or woodland trail
- e.g showcasing local artists



**KNOXVILLE
SOUTH WATERFRONT
PUBLIC IMPROVEMENTS**

KNOXVILLE, TENNESSEE

Lead Consultant



**111 MARKET STREET
CAMBRIDGE, MA 02139
817 451 4070
HAKSWY@GMAIL.COM
WWW.HAKSWY.COM**

Masterplan Overview/Urban Design
Chan Kiefer-Sienkiewicz
1000 Market Street, Suite 200
Knoxville, TN 37901
Tel: 617 354 5315

Masterplan Overview/Transportation
Glenn Jackson
1000 Market Street, Suite 200
Knoxville, TN 37901
Tel: 617 354 5315

Means Engineering
Moffat & Nichol
1016 East Main Street, Suite 100
Knoxville, TN 37901
Tel: 617 791 4826

Lighting Design
Lum Partners
1016 East Main Street, Suite 100
Knoxville, TN 37901
Tel: 617 354 4502

Landscape Architecture
RosaFowler
820 Gay Street, Suite 200
Knoxville, TN 37902
Tel: 865 637 1100

Benfield Richies
516 Union Avenue
Knoxville, TN 37902
Tel: 865 637 7009

Civil Engineers
Cannon & Cannon
9724 Kingston Pike, Suite 110
Knoxville, TN 37902
Tel: 865 670 8555

Wilbur Smith
1100 Market Street, Suite 200
Knoxville, TN 37901
Tel: 865 637 4201

**NOT FOR
CONSTRUCTION**

Issue	Date
03 Final SD package	06/04/08
04 Draft SD package	12/21/07
07 Proposals	11/13/07
08 Proposals	10/23/07
09 Proposals	10/02/07
10 Proposals	09/04/07
11 Proposals	08/07/07
12 Proposals	07/17/07
01 Proposals	06/12/07

JOB NO. HAKSWY 0701

Scale: N.T.S.

Date: 04 June 2009

Title: SCHEMATIC DESIGN
SITE INTERPRETATION
& SIGNAGE PLAN

Sheet No. L107

KNOXVILLE
SOUTH WATERFRONT
PUBLIC IMPROVEMENTS

KNOXVILLE, TENNESSEE
Lead Consultant

THE HOK GROUP
ASSOCIATES
118 MARKET PLACE
CHAMBERS, VA 23139
703.427.4000
703.427.4004
HOKVA@HOK.COM

Massipain Overview/Urban Design
Chris Koger, Senior Designer
1000 Main Street, Suite 200
Cambridge, MA 02138
Tel: 617.354.5315

Massipain Overview/Transportation
Clayton Jackson
Orlando, FL 32801
Tel: 407.843.6552

Marine Engineering
Adriett & Nicol
Raleigh, NC 27609
Tel: 919.781.4526

Lighting Design
Lynn Parsons
Cambridge, MA 02140
Tel: 617.354.4502

Landscape Architecture
Rosa Forder
Knoxville, TN 37902
Tel: 865.637.1100

Benfield Richards
Knoxville, TN 37902
Tel: 865.637.7009

Civil Engineers
Cannon & Cannon
Knoxville, TN 37922
Tel: 865.670.8555

Wilbur Smith
1100 Main Street, Suite 200
Knoxville, TN 37902
Tel: 865.883.4300

NOT FOR CONSTRUCTION

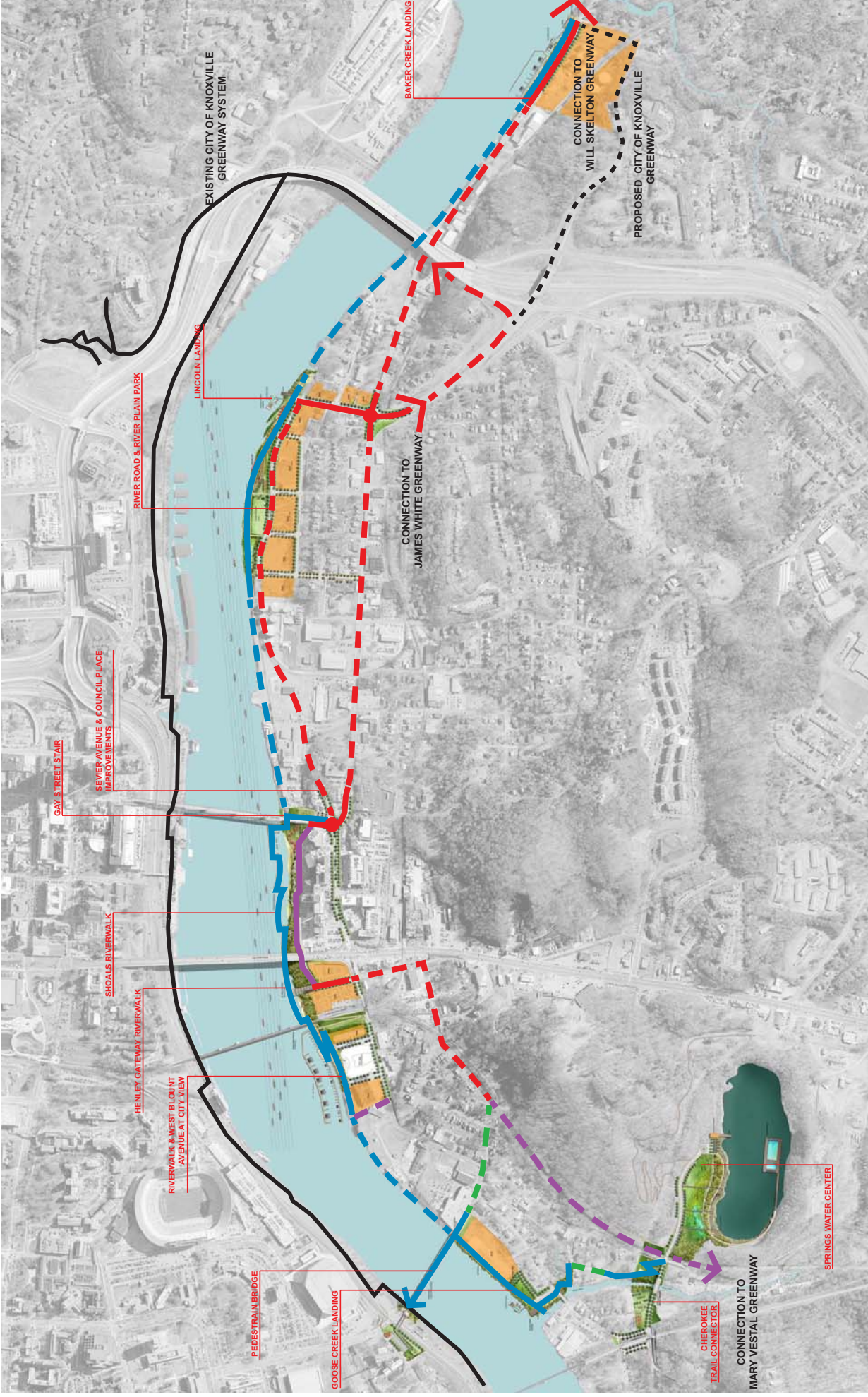
05	Final SD package	06.04.08
06	Final SD package	12.21.07
07	In progress	11.13.07
08	In progress	10.23.07
09	In progress	09.14.07
10	In progress	07.23.07
11	In progress	06.12.07
	Issue	Date



JOB NO. HAKSW 0701
Scale
Date 04 June 2008
Title

SCHEMATIC DESIGN
CYCLE NETWORK PLAN

Sheet No. L108



CYCLE NETWORK

- Phase 1 Future Phases
- RIVERWALK
 - DEDICATED CYCLE ROUTE
 - ON STREET CYCLE LANES
 - SHARED ON STREET CYCLE ROUTE

**KNOXVILLE
SOUTH WATERFRONT
PUBLIC IMPROVEMENTS**

KNOXVILLE, TENNESSEE
Lead Consultant

HOK ASSOCIATES
118 MADISON STREET
CAMBRIDGE, MA 02139
TEL: 617 552 8200
WWW.HOK.COM

Masterplan, Overview/Urban Design
John Koger, Senior Architect
Cambridge, MA 02139
Tel: 617 554 1315

Masterplan, Overview/Transportation
Clayton Johnson
Orlando, FL 32801
Tel: 407 843 6552

Marine Engineering
Moffett & Neel
Raleigh, NC 27609
Tel: 919 781 4626

Landscape Architecture
Lynn Parsons
Cambridge, MA 02140
Tel: 617 354 4502

Roof/Facade
Landscape Architecture
Knoxville, TN 37902
Tel: 865 537 1100

Bioregional Notches
Knoxville, TN 37902
Tel: 865 837 7009

Civil Engineers
Carmon & Cannon
Knoxville, TN 37922
Tel: 865 676 8555

Willbur Smith
1100 Mellon Street Suite 200
Knoxville, TN 37902
Tel: 865 953 4300

**NOT FOR
CONSTRUCTION**

01 Final SD package	06.04.08
02 Civil SD package	12.21.07
03 In progress	11.13.07
04 In progress	10.22.07
05 In progress	09.04.07
06 In progress	07.23.07
07 In progress	07.17.07
08 In progress	06.12.07
Issue	Date

Job No. HAKSW0701
Scale N.T.S.
Date 04 June 2008
Title

SCHEMATIC DESIGN
PROJECT AREAS KEY
PLAN

Sheet No. L109

