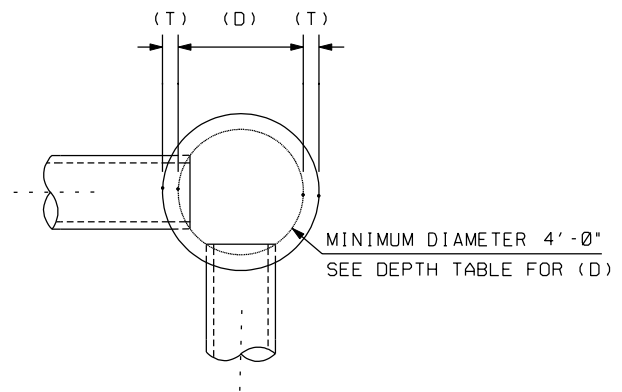
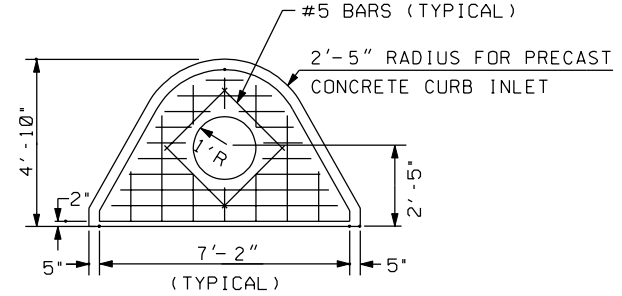


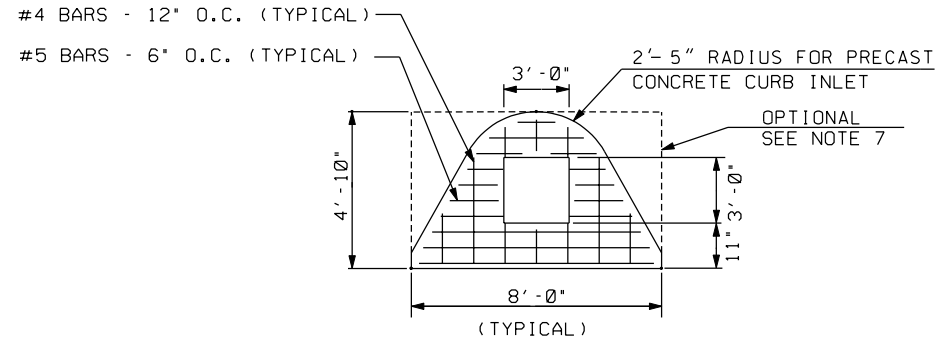
REVISIONS			
No.	DATE	BY	BRIEF DESCRIPTION
1	08-NOV-01	RLT	Added Reinforcement Notes



SECTION A-A



SUMP INLET TOP SECTION

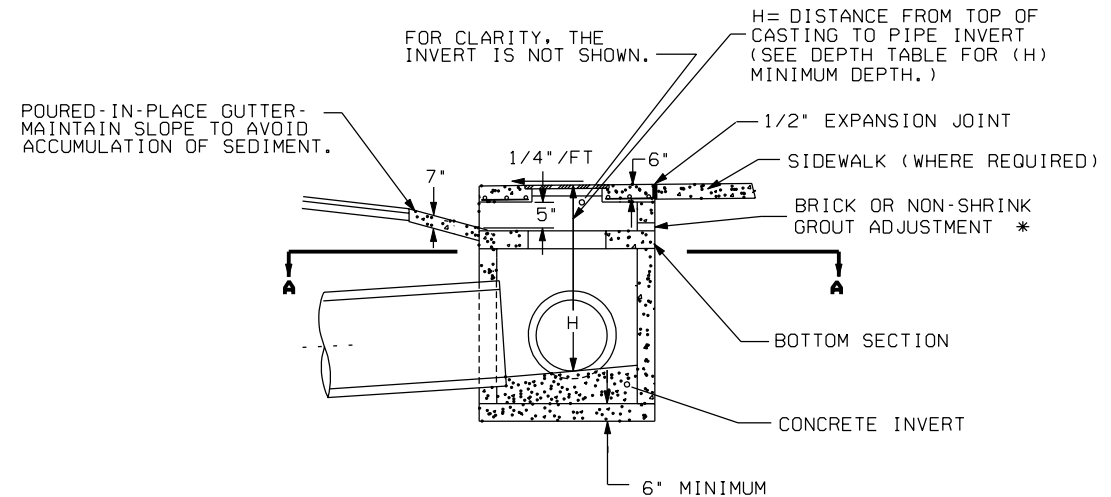


SUMP INLET BOTTOM SECTION

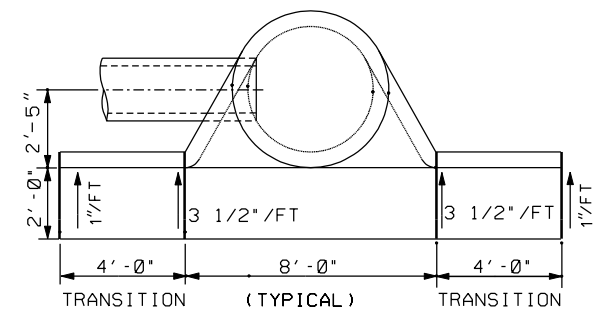
DEPTH TABLE

PIPE SIZE	(D) LOWER PORTION INLET DIAMETER **	(T) WALL THICKNESS CONCRETE	(H) MINIMUM DEPTH
12"	4'	5"	3'-9"
15"	4'	5"	4'-0"
18"	4'	5"	4'-3"
21"	4'	5"	4'-9"
24"	4'	5"	5'-0"
30"	4'	5"	5'-6"
** 36"	5'	6"	6'-9"
** 42"	6'	7"	7'-3"
** 48"	6'	8"	7'-9"
SPAN RISE			
23" X 14"	4'	5"	4'-0"
30" X 19"	4'	6"	4'-3"
** 38" X 24"	5'	6"	5'-9"
** 45" X 29"	6'	7"	6'-3"

** SPAN-RISE DENOTES ELLIPTICAL AND ARCHED PIPES.



SIDE VIEW



SUMP INLET

NOTES:

1. THE LOWER PORTION (ROUND, PRE-CAST MANHOLE) SHALL BE CONSTRUCTED TO MEET ASTM C-478.
2. THE MANHOLE FRAME AND COVER SHALL BE IN ACCORDANCE WITH CITY OF KNOXVILLE STANDARD DETAIL FOR TRAFFIC BEARING MANHOLE FRAMES AND COVERS, NO. COK-2.
3. THE TOP SURFACE OF THE TOP SECTION SHALL HAVE A BROOM FINISH TO MATCH THE EXISTING OR PROPOSED SIDEWALK.
4. CONCRETE INVERTS SHALL BE CONSTRUCTED IN THE FIELD AS TO PROVIDE POSITIVE FLOW.
5. EACH SECTION OF THE PRECAST STRUCTURE SHALL HAVE NOT MORE THAN THREE HOLES FOR THE PURPOSE OF HANDLING AND LAYING.
6. LIFTING DEVICE HOLES SHALL BE TAPERED AND PLUGGED WITH STOPPERS OR MORTAR AFTER INSTALLATION.
7. THE SUMP INLET BOTTOM SECTION MAY BE RECTANGULAR.

** DIAMETER OF LOWER PORTION SHALL MEET MINIMUM DIAMETER (D) AS LISTED ABOVE. DIAMETER IS BASED ON PROPOSED PIPE SIZE. A PRECAST TRANSITION SLAB WILL BE UTILIZED TO ACCOMMODATE THE USE OF THE TOP PORTION AS SHOWN AND DIMENSIONED ON THIS DETAIL.

* ADJUSTMENTS
FOR BRICK ADJUSTMENT CONSTRUCTION, JOINTS SHALL ALWAYS BE COMPLETELY FILLED WITH MORTAR. VERTICAL MORTAR JOINTS SHALL NOT BE MORE THAN 3/8" THICK AND HORIZONTAL MORTAR JOINTS NOT LESS THAN 3/8" THICK AT THE INSIDE FACE. INSIDE JOINTS SHALL BE TROWEL STRUCK, FLUSH JOINTS TO PROVIDE A SMOOTH, CLEAN SURFACE, WHILE OUTSIDE WALLS SHALL BE ENTIRELY COVERED WITH MORTAR FOR A SMOOTH, CLEAN SURFACE.

CITY OF KNOXVILLE DEPARTMENT OF ENGINEERING	DRAWN: MLR DATE: 08-MAY-01 CHECKED: RLT APPROVED: DTH
STANDARD DETAIL FOR CURB INLET (PRECAST CONCRETE)	
COK-8	