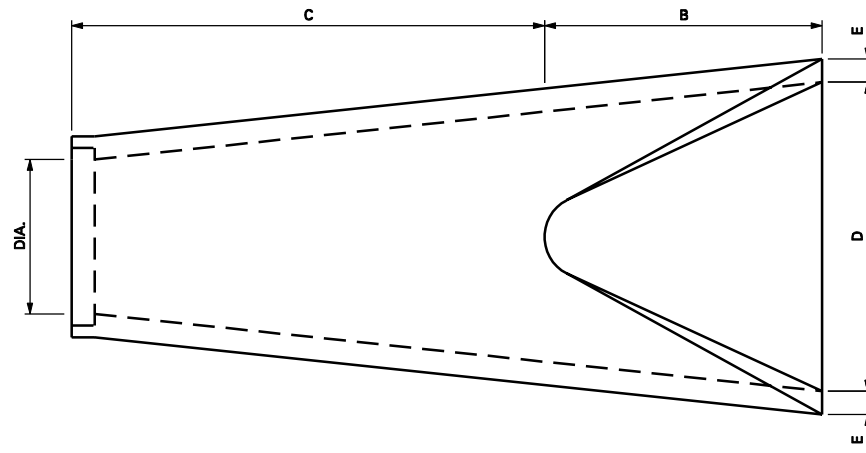
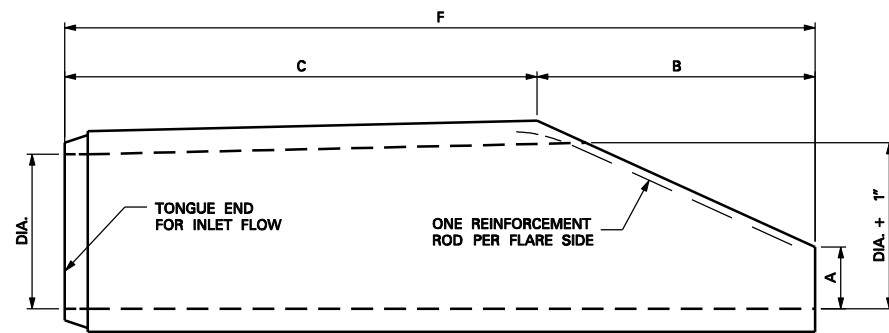


REVISIONS			
No.	DATE	BY	BRIEF DESCRIPTION
1	21-NOV-01	RLT	Removed plan view (w/ groove end) and a note for flare end

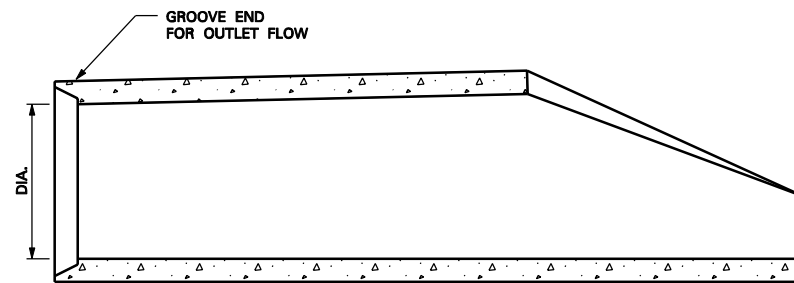
FLARED END SECTION



PLAN (W/GROOVE END)



ELEVATION (W/TONGUE END)



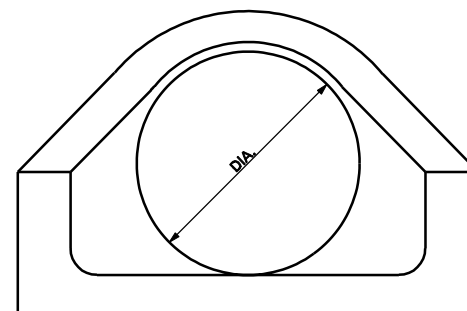
SECTION (W/GROOVE END)

DIMENSIONS

DIA.	A	B	C	D	E	F	EST. WT.
15"	6"	27"	46"	30"	2.25"	73"	900 lb
18"	9"	27"	48"	36"	2.5"	73"	1000 lb
24"	9.5"	43.5"	30"	48"	3.0"	73.5"	1600 lb
30"	12"	54"	19.75"	60"	3.25"	73.75"	2250 lb

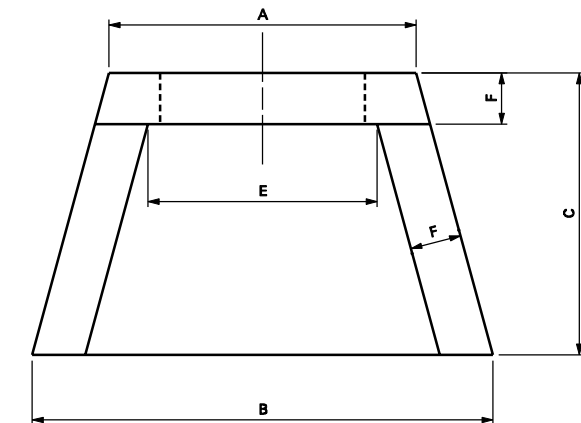
REINFORCEMENT (MINIMUM)

DIA.	RODS	WWF (SQ. IN / L.F.)	
LONG.	CIRCUM.	LONG.	
15"	2-#3x2'-3"	0.126	0.03
18"	2-#3x2'-3"	0.126	0.03
24"	2-#3x4'-0"	0.174	0.04
30"	2-#4x5'-0"	0.24	0.04

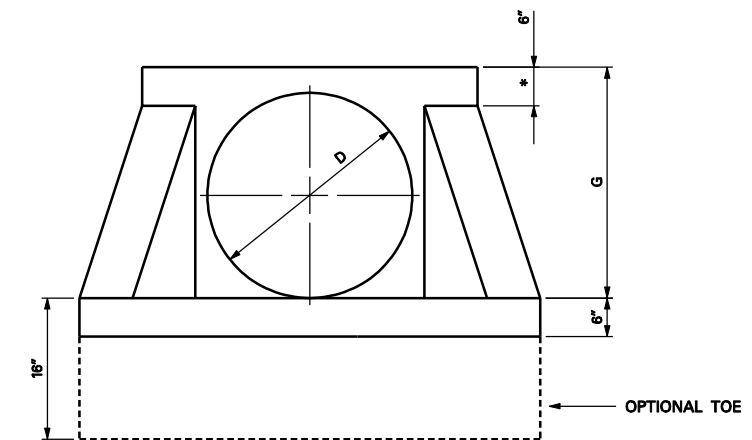


END VIEW

HEADWALL

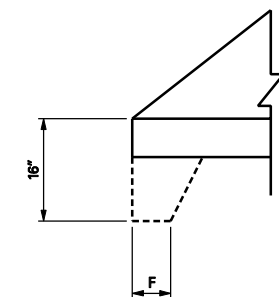


PLAN



ELEVATION

PIPE	HW-15	HW-24	HW-42	HW-48
A	32"	48"	80"	99"
B	48"	72"	102"	120"
C	30"	44"	54"	56"
D	22"	32"	55"	60"
E	24"	36"	64"	83"
F	6"	8"	8"	8"
G	26"	36"	60"	66"
WT#	1380	3100	8100	9100



TOE DETAIL

- NOTE:
 1. MINIMUM REINFORCING WIRE REINFORCEMENT 4x4 W7xW7.
 2. $f_c = 4,000$ psi.
 3. $f_y = 60$ Ksi.
 * 0" ON HW-15 HEADWALL

CITY OF KNOXVILLE DEPARTMENT OF ENGINEERING STANDARD DETAIL FOR REINFORCED CONCRETE PIPE FLARED-END SECTION AND HEADWALL	DRAWN: JC DATE: 22-MAR-01 CHECKED: BEF APPROVED: DTH
	COK-3