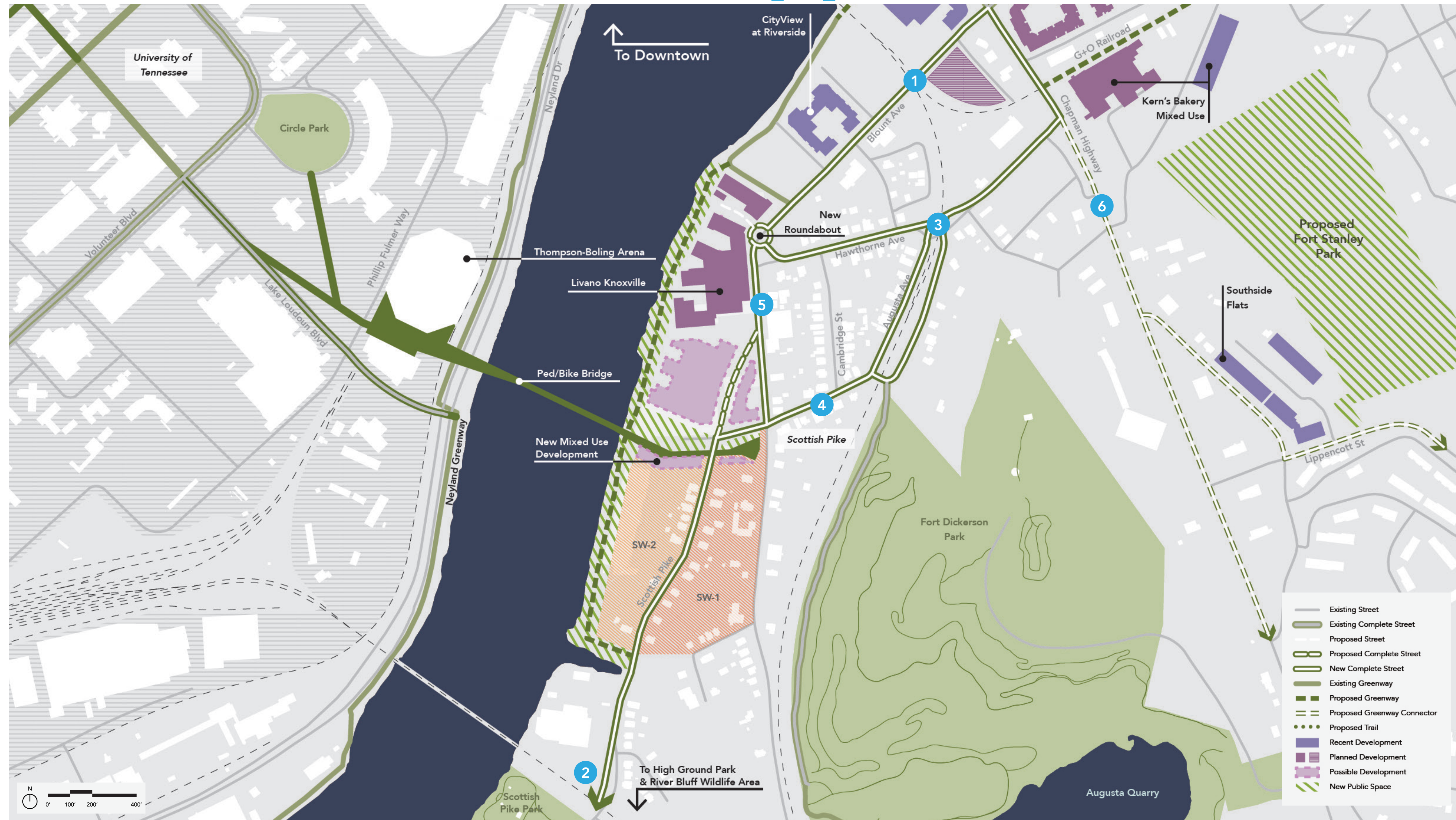


07 Possibilities + Opportunities — Down River

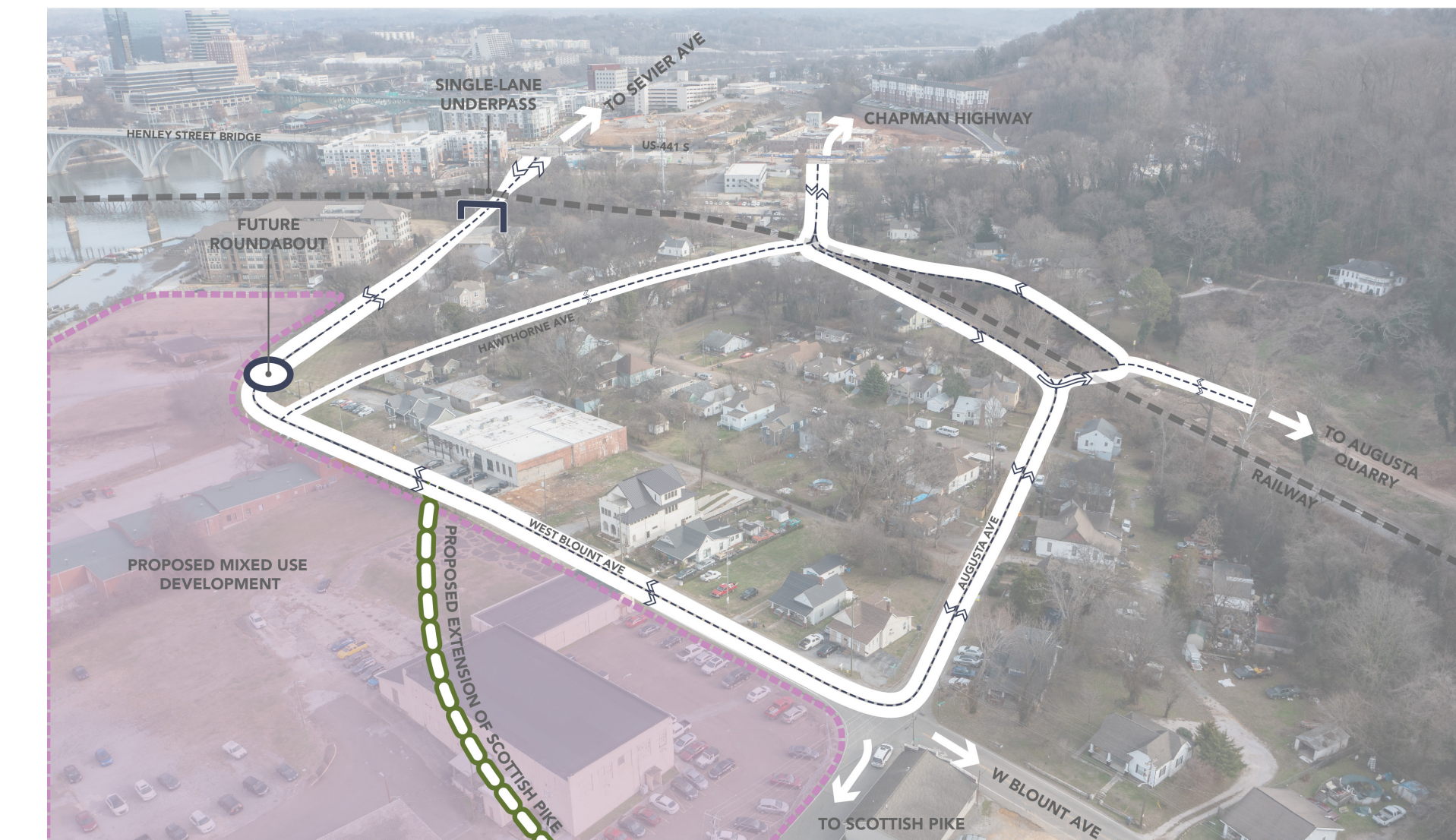


Bridge as Catalyst

The proposed Pedestrian Bicycle Bridge over the Tennessee River connecting the South Waterfront District to the University of Tennessee campus will be a catalyst for a mixture of development and multi-modal connections to facilitate the South Waterfront Down River district as an active place for people to live, work, and play. The bridge was identified as a key investment through the extensive community driven process to support greater connectivity of the South Waterfront District and the neighborhoods beyond to the University of Tennessee and downtown. The pedestrian-bicycle bridge will provide efficient, sustainable access to jobs, services, work, and school while maximizing pedestrian and bicycle safety across the river. While some new housing has already been built, the realization of increased mixed use development in the Down River district prioritizes the recommendations in the Vision Plan for improvements to the existing infrastructure.

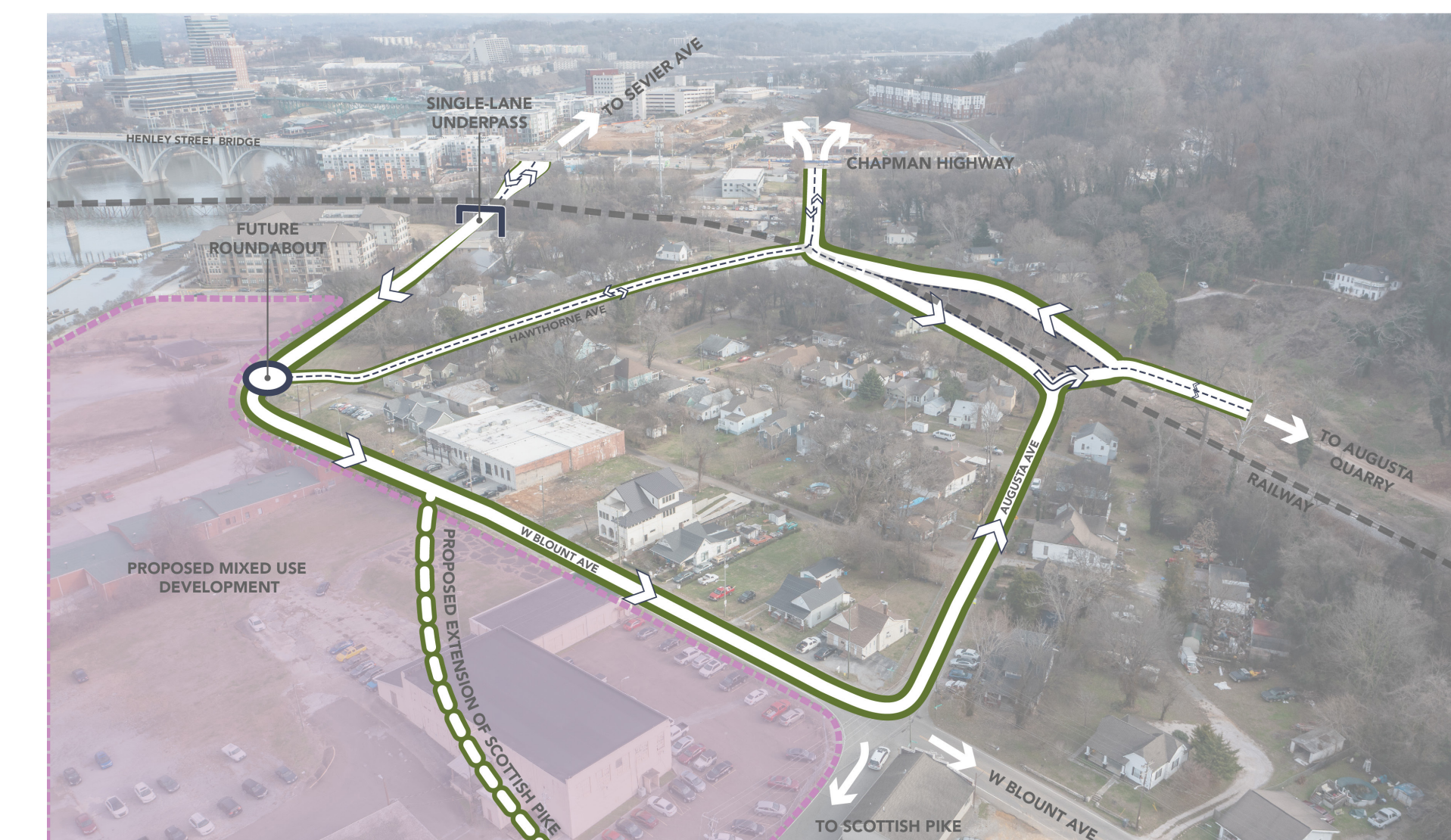
Possibility 1 - Maintain Traffic Pattern

Maintain the Existing Two Way Traffic Pattern



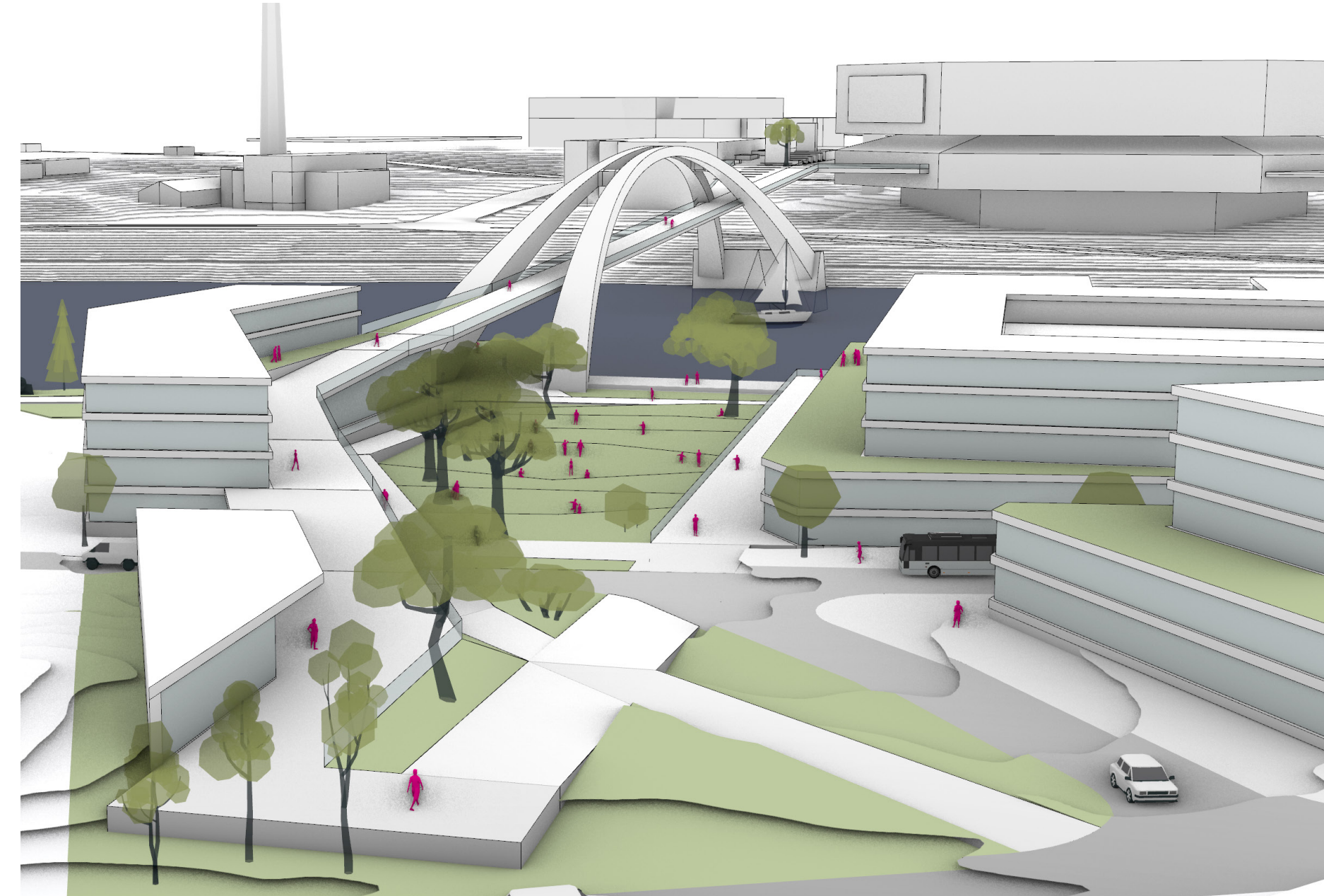
Possibility 2 - Traffic Realignment

Realign to a One Way Loop for Complete Street Design

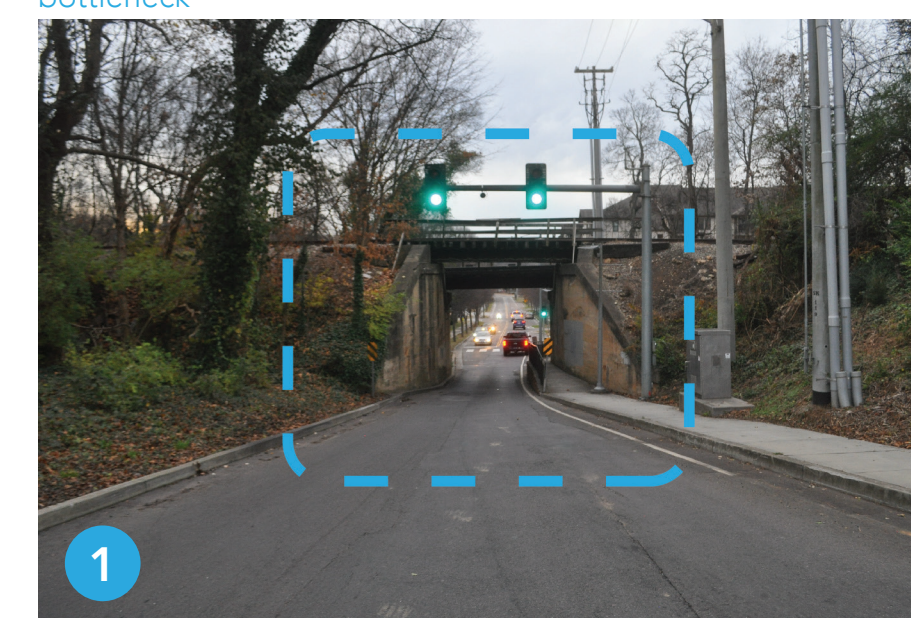


Pedestrian + Bike Bridge

In process



Blount Ave - narrow railroad underpass creates a traffic bottleneck



Blount Ave - narrow railroad underpass creates a traffic bottleneck



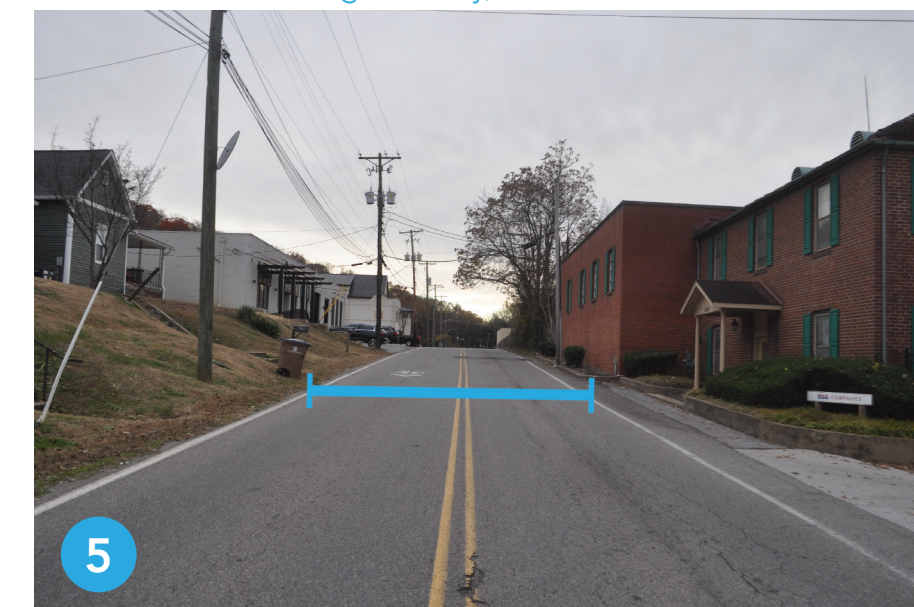
Augusta Ave - divided neighborhood street with railroad in between



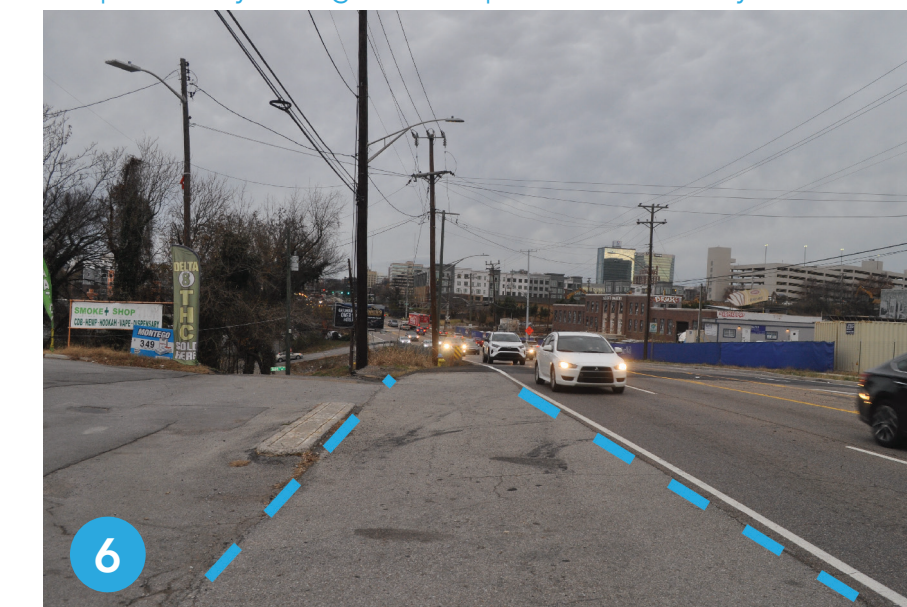
Augusta Ave - narrow right of way, no sidewalks or bike lanes



Blount Ave - narrow right of way, no sidewalks or bike lanes

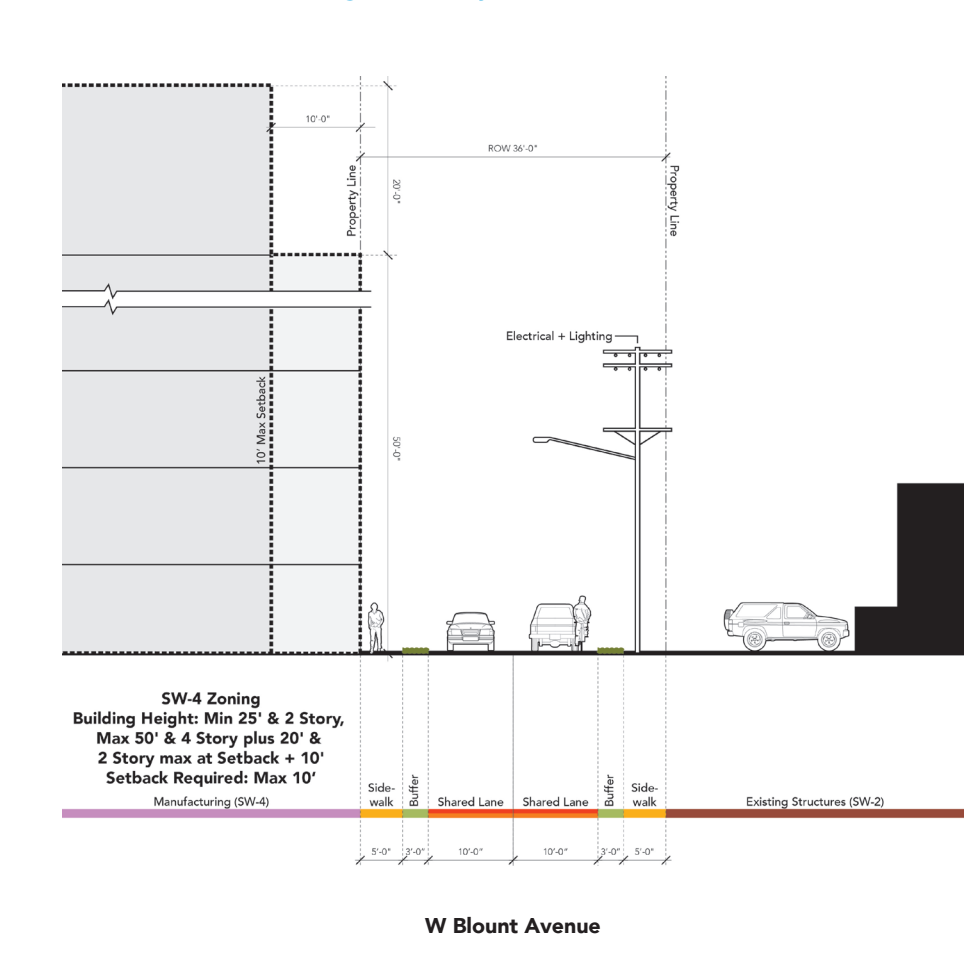


Chapman Hwy - dangerous for pedestrians and cyclists



Possibility 1 - Typical Section

Maintain the Existing Two Way Traffic Flow



Possibility 2 - Typical Section

Redesign to a One Way Loop for Complete Street Design

