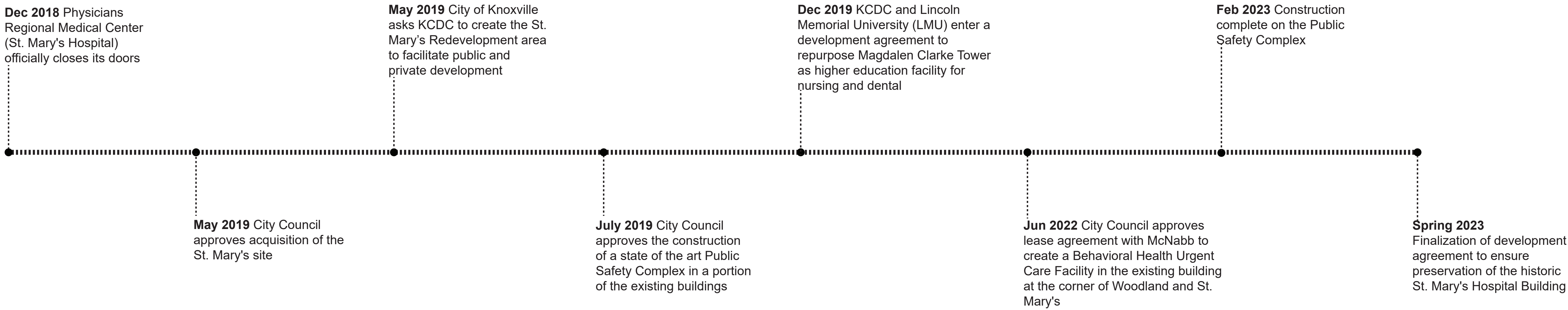




TIMELINE OF ST. MARY'S REDEVELOPMENT



REDEVELOPMENT GOALS:

- LISTEN TO THE NEIGHBORHOOD FOR THE PRIORITIES OF THE REDEVELOPMENT OF NORTH CAMPUS
- CREATE ACCESS TO OPEN/GREEN SPACES
- CREATE WALKABLE CONNECTIVITY THRU THE SITE TO PARKS, SCHOOLS, COMMUNITY CENTER, GROCERY STORE AND FUTURE GREENWAYS
- REUSE AND PRESERVE THE HISTORICAL ST. MARY'S HOSPITAL BUILDING
- PROVIDE NEW HOUSING
- PROVIDE ACCESS TO EXISTING TRANSIT
- IMPROVE THE QUALITY OF LANDSCAPE IN THE AREA
- PROVIDE ADDITIONAL AMENITIES TO THE SURROUNDING NEIGHBORHOODS



COMMUNITY INPUT:

- PLEASE USE THE STICKY NOTES PROVIDED TO EXPRESS IDEAS, INTEREST, OR QUESTIONS RELATED TO THE DEVELOPMENT.



CHRISTENBERRY
BALLFIELDS
(CITY OWNED)

FUTURE CITY OF
KNOXVILLE
PLAYGROUND

CHRISTENBERRY
ELEMENTARY
SCHOOL



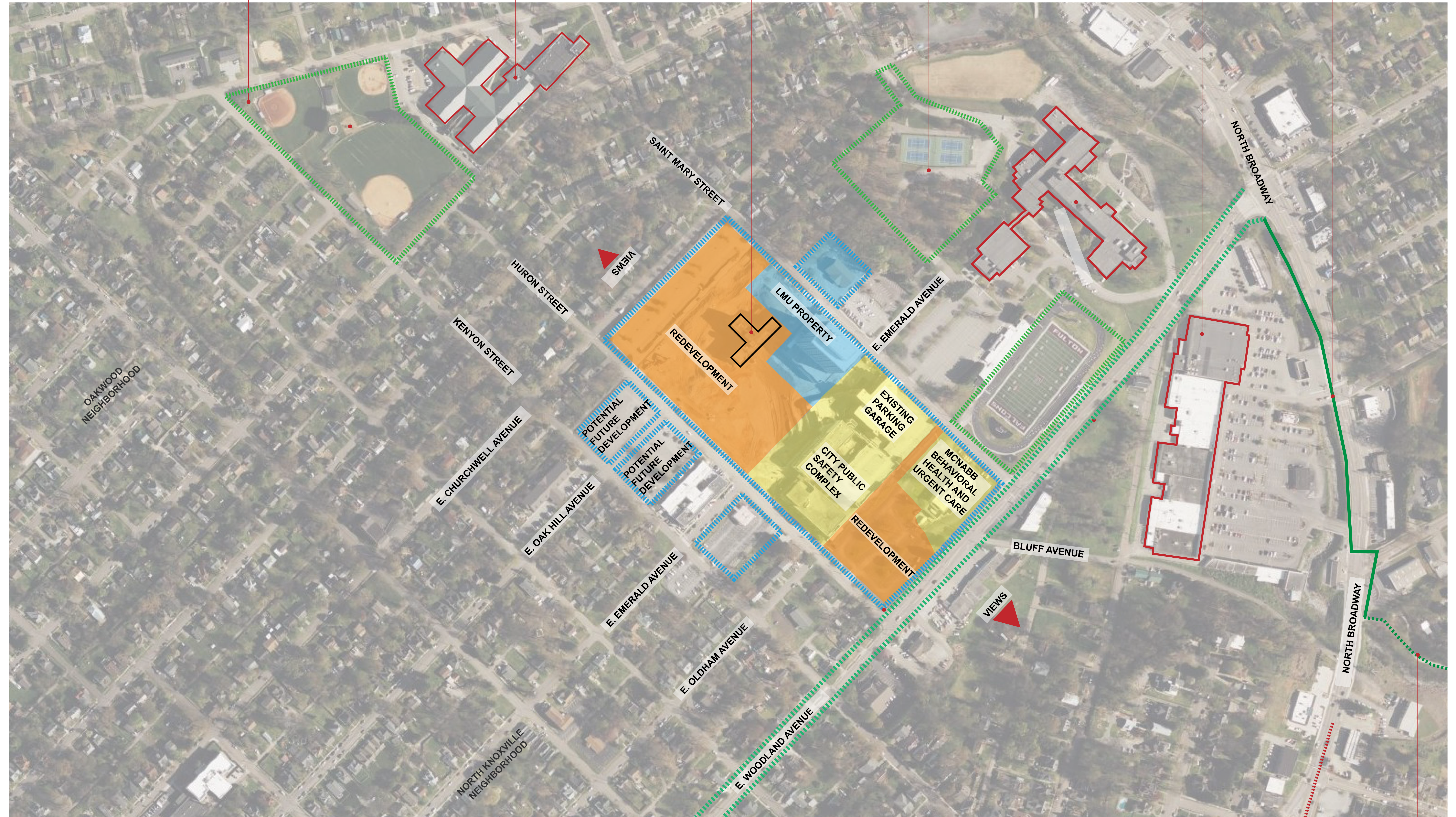
HISTORIC ST. MARY'S HOSPITAL BUILDING
TO BE RESTORED & REUSED

FULTON
BICENTENNIAL PARK

FULTON HIGH
SCHOOL

SHOPPING AND
GROCERY STORE

NEW
GREENWAY
ALONG N.
BROADWAY



LEGEND

- INDICATES DEVELOPMENT BOUNDARY
- CITY OWNED
- REDEVELOPMENT
- LMU TOWER
- POTENTIAL FUTURE DEVELOPMENT/FUTURE DEVELOPMENT

EXISTING BUS STOP

NEW BIKE LANES, BOTH SIDES
AND EXISTING NORTH
SIDEWALK WITH NEW
SIDEWALK ON SOUTH SIDE

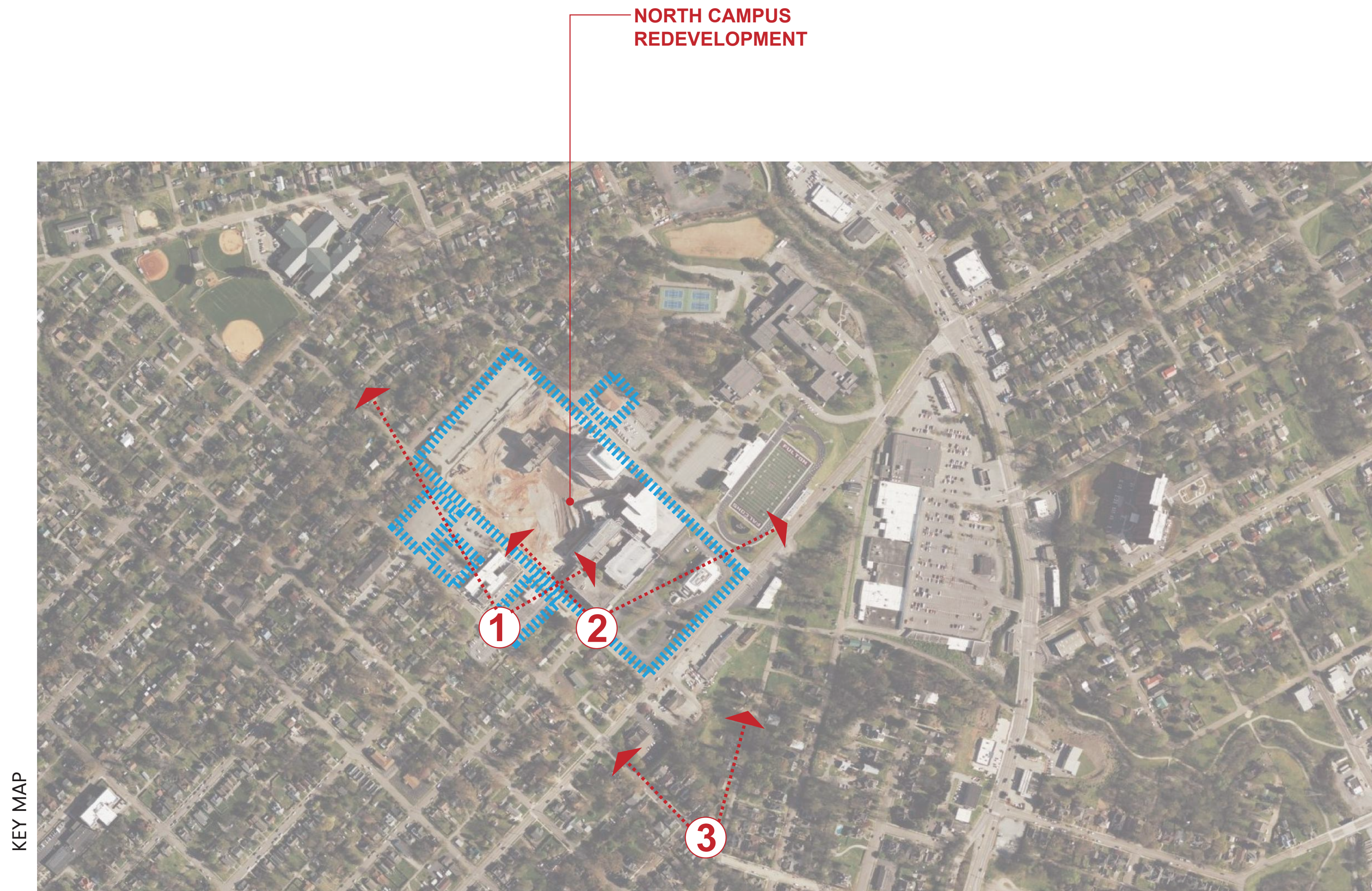
ACCESS TO
DOWNTOWN

EXISTING
FIRST CREEK
GREENWAY

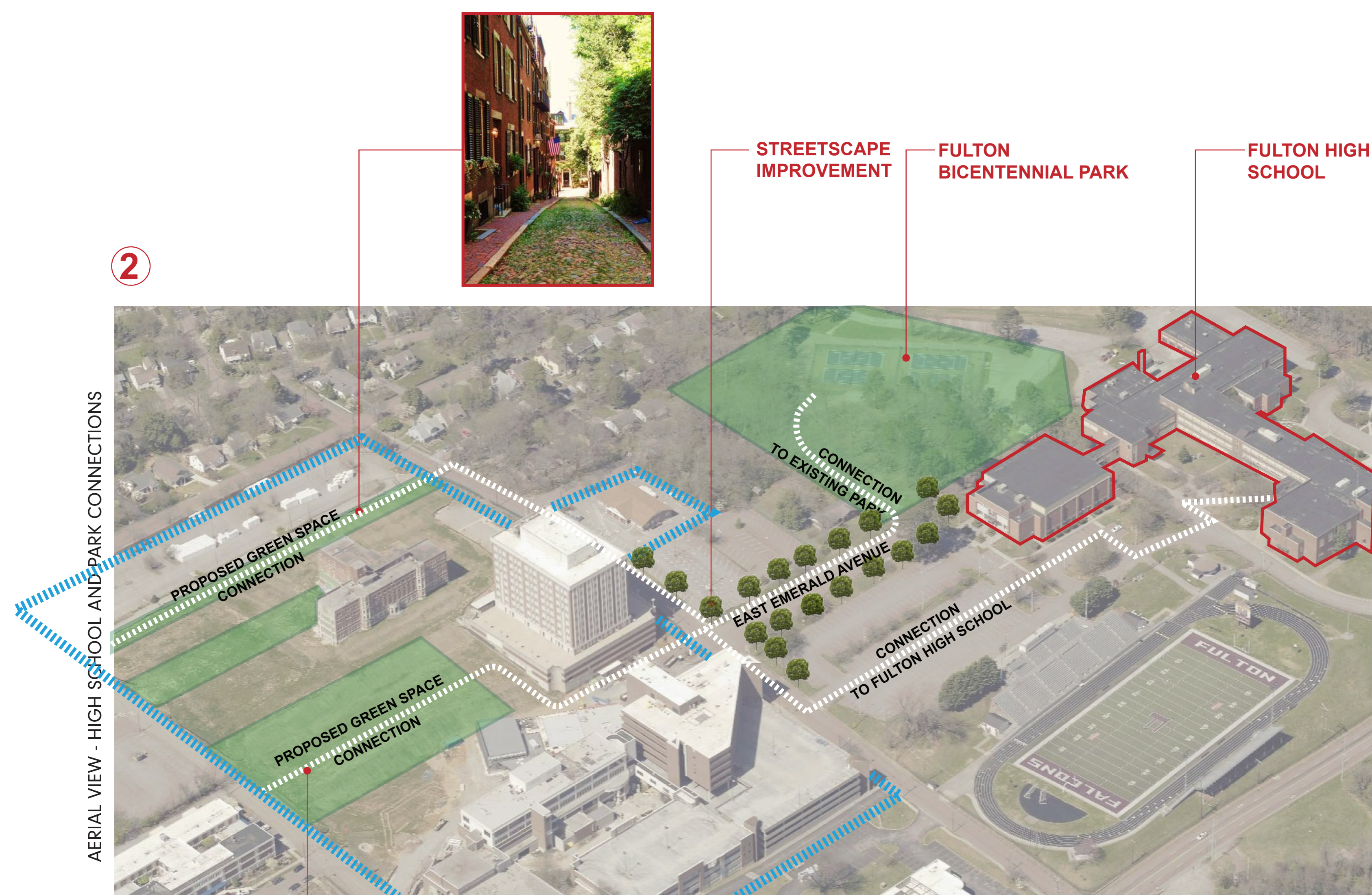
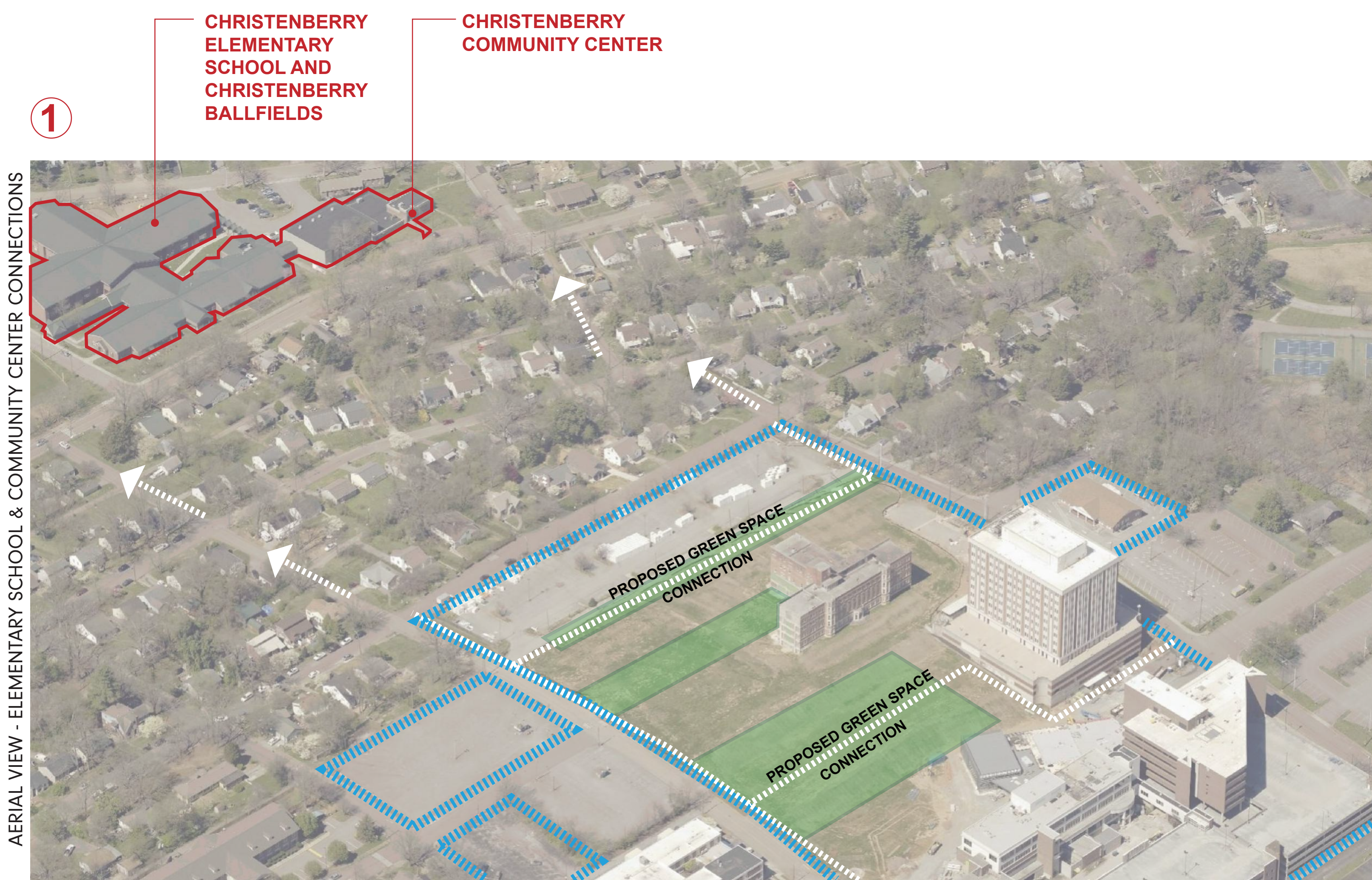


LEGEND

	INDICATES DEVELOPMENT BOUNDARY		CITY OWNED		REDEVELOPMENT		LMU TOWER		POTENTIAL FUTURE DEVELOPMENT/FUTURE DEVELOPMENT
--	--------------------------------	--	------------	--	---------------	--	-----------	--	---

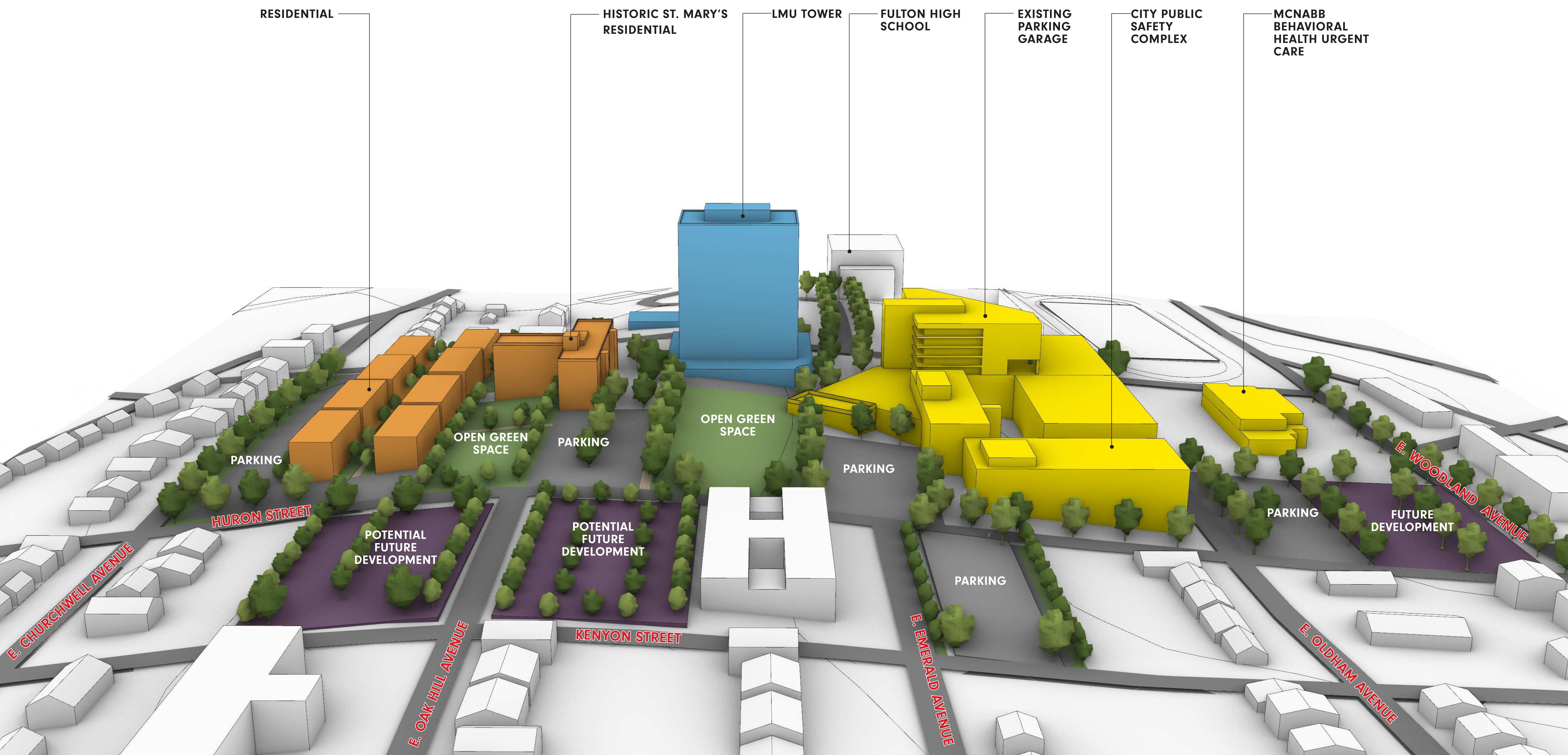


KEY MAP



LEGEND

- WALKING CONNECTIONS
- INDICATES DEVELOPMENT BOUNDARY
- CITY OWNED
- REDEVELOPMENT
- LMU TOWER
- POTENTIAL FUTURE DEVELOPMENT/FUTURE DEVELOPMENT




LEGEND





LEGEND

 CITY OWNED	 REDEVELOPMENT	 LMU TOWER	 POTENTIAL FUTURE DEVELOPMENT/FUTURE DEVELOPMENT
---	---	---	---