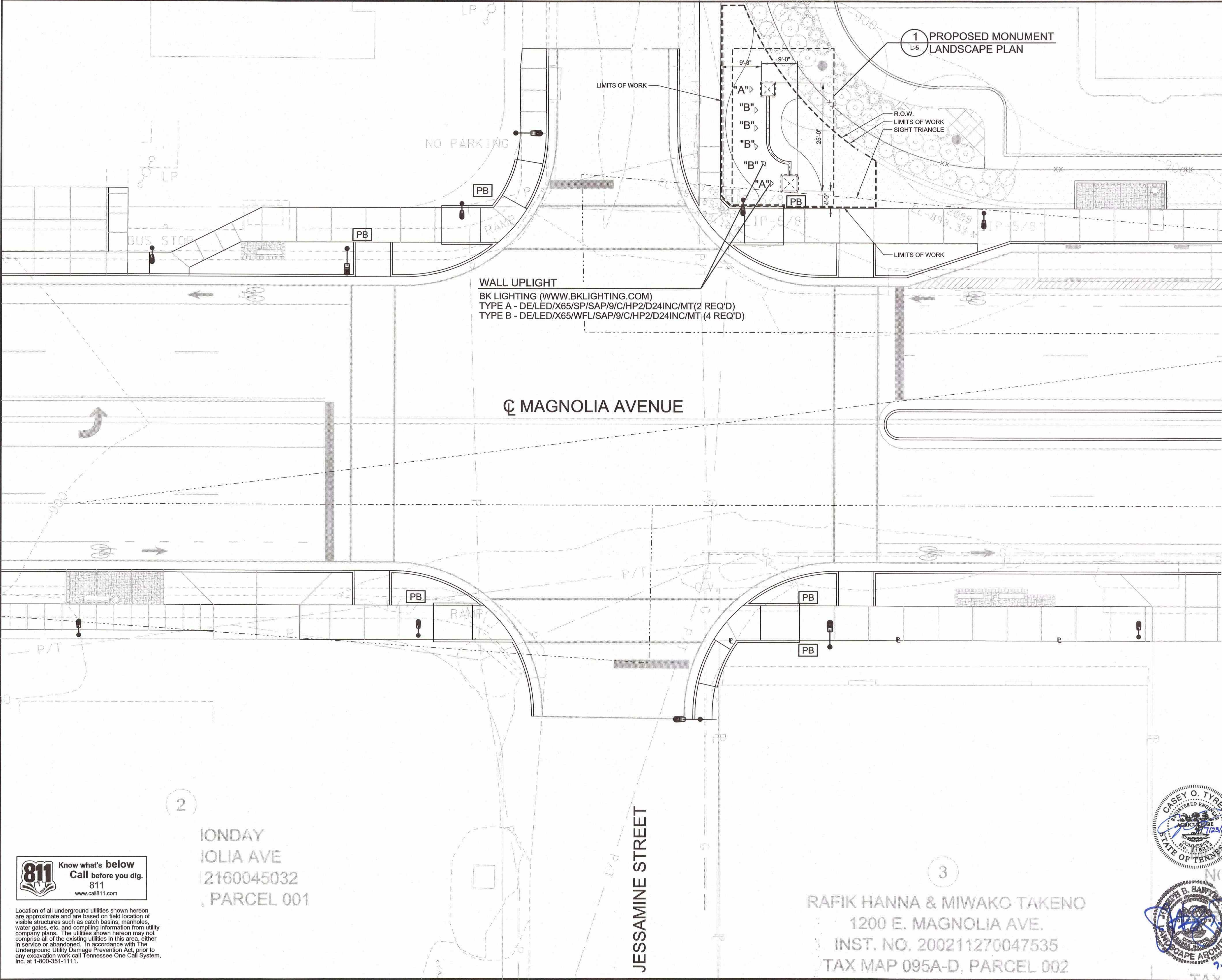


| | | | | | |
|-------------|------------|------|-------------------|-----------|--|
| PROJECT No. | | YEAR | | SHEET No. | |
| 18A-C-0663 | | 2018 | | L-3 | |
| REVISIONS | | | | | |
| No. | DATE | BY | BRIEF DESCRIPTION | | |
| 0 | 07-24-2018 | DKN | ISSUED FOR BID | | |
| | | | | | |
| | | | | | |
| | | | | | |
| | | | | | |
| | | | | | |
| | | | | | |
| | | | | | |
| | | | | | |



- NOTES:**
- REFER TO L-2 FOR GENERAL NOTES.
 - BASE INFORMATION PER BWSC SURVEY DATA.
- LIGHTING NOTES:**
- PROVIDE 1/2" C, 2 #12, 1#12G (XHHW) BETWEEN TYPE "A" & "B" LIGHTING FIXTURES AND CONNECT.
 - PROVIDE 1/2" C, 2 #12, 1#12G (XHHW) FROM LAST LIGHTING FIXTURE (A) TO PULL BOX LOCATED SOUTH OF PROPOSED MONUMENT LOCATION; CONNECT TO EXISTING CIRCUIT/WIRE WITH SUBMERSIBLE SPLICE KITS.
 - (1) 3/4" C, 2#10, 1#10 GND PROVIDE WATER-PROOF TRON INLINE FUSE HOLDER HEB-AY W/5 AMP KTK TYPE FUSE FOR PROPOSED MONUMENT LIGHTING. COIL 10' OF CONDUCTORS AND SAFE OFF.



Location of all underground utilities shown hereon are approximate and are based on field location of visible structures such as catch basins, manholes, water gates, etc. and compiling information from utility company plans. The utilities shown hereon may not comprise all of the existing utilities in this area, either in service or abandoned. In accordance with The Underground Utility Damage Prevention Act, prior to any excavation work call Tennessee One Call System, Inc. at 1-800-351-1111.

IONDAY
IOLIA AVE
2160045032
PARCEL 001

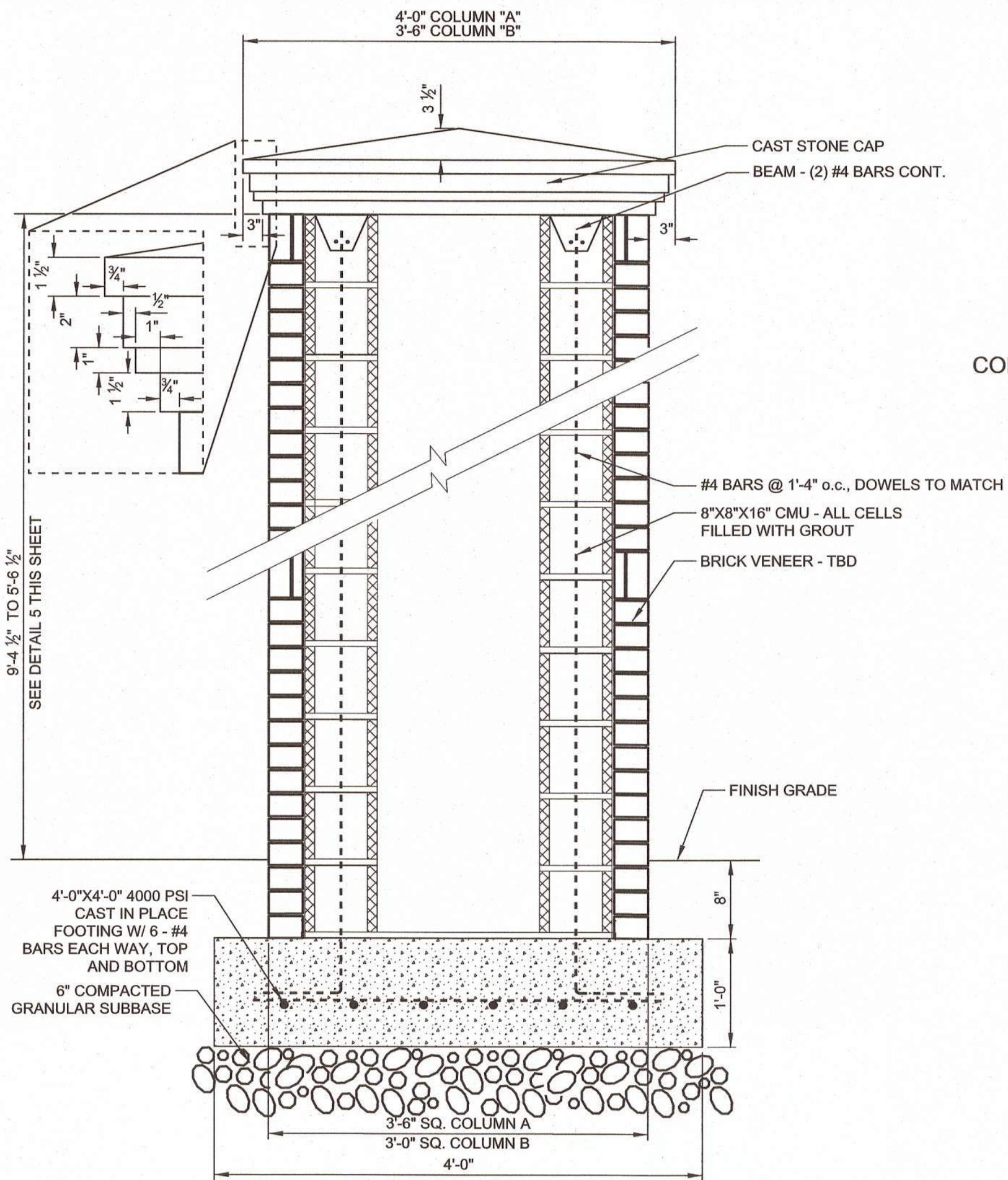
RAFIK HANNA & MIWAKO TAKENO
1200 E. MAGNOLIA AVE.
INST. NO. 200211270047535
TAX MAP 095A-D, PARCEL 002



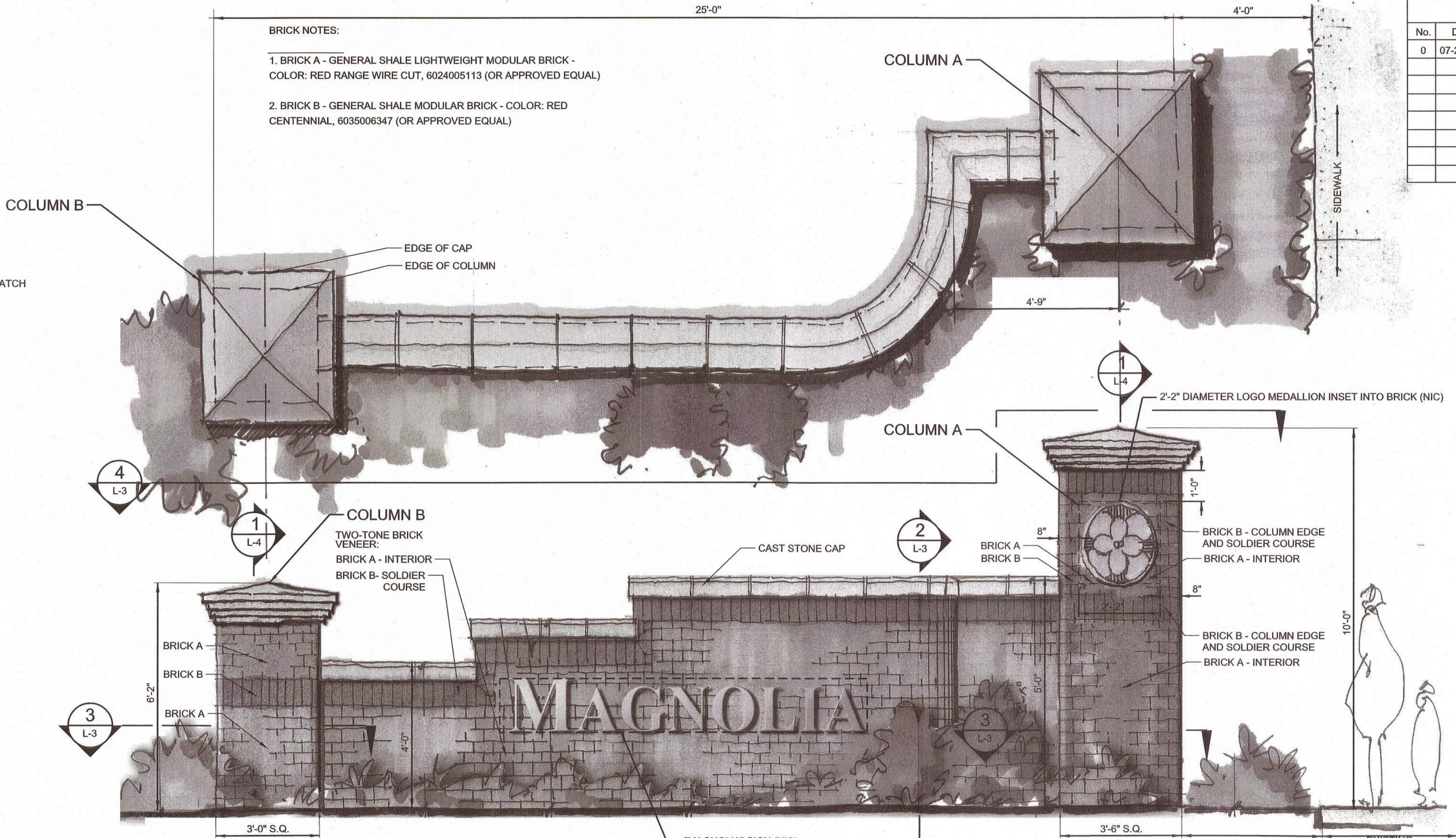
CITY OF KNOXVILLE
OFFICE OF REDEVELOPMENT
PROPOSED LAYOUT
GATEWAY MONUMENT AT
MAGNOLIA AVENUE &
JESSAMINE STREET
SCALE: 1" = 10'

DRAWN: DKN
DESIGNED: JBS
DATE: 07-24-2018
CHECKED: JBS
APPROVED: COT

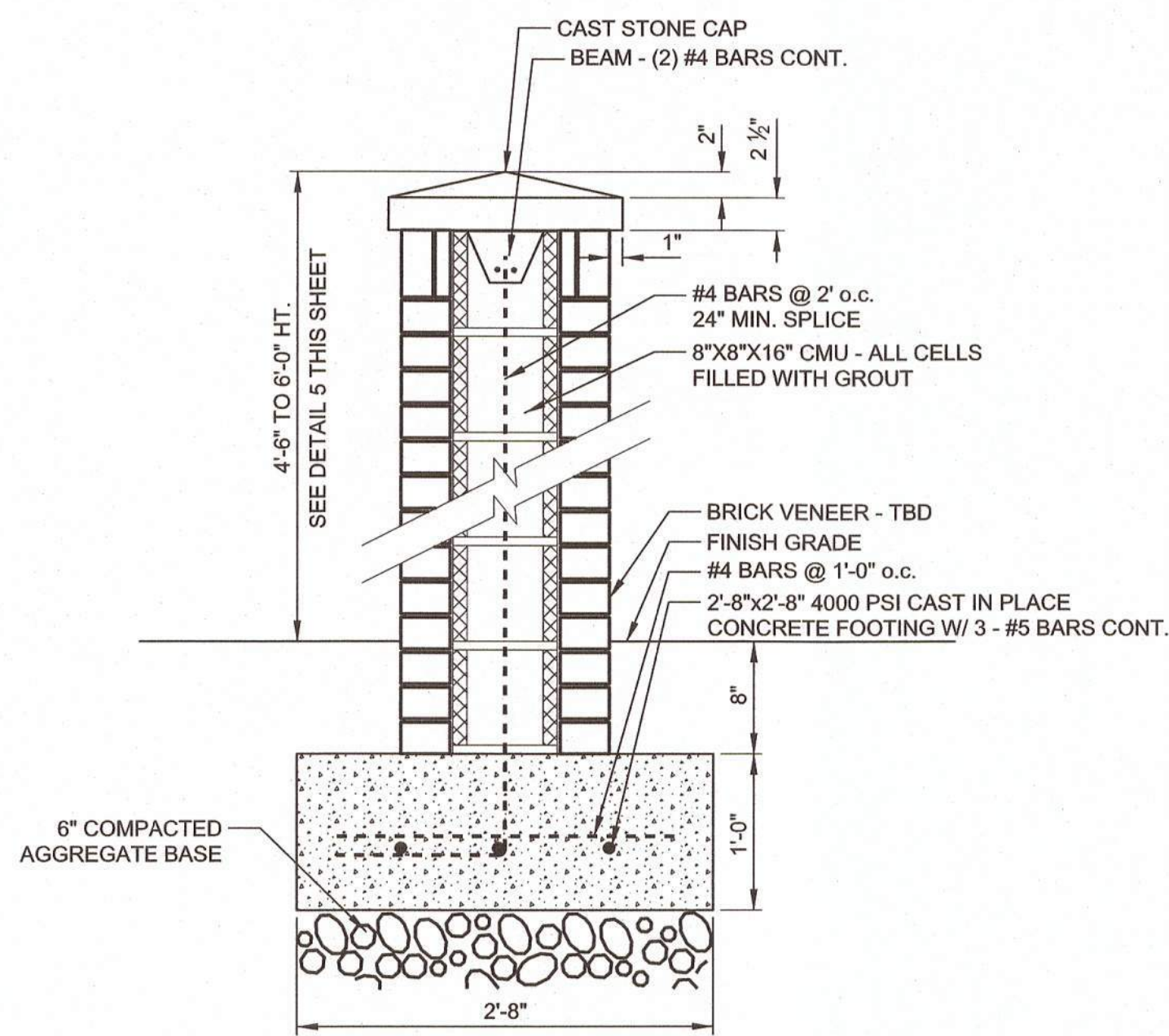
| | | | | | |
|-------------|------------|------|-------------------------|-----------|--|
| PROJECT No. | | YEAR | | SHEET No. | |
| 18A-C-0663 | | 2018 | | L-4 | |
| REVISIONS | | | | | |
| No. | DATE | BY | BRIEF DESCRIPTION | | |
| 0 | 07-24-2018 | DKN | REVISED FOR PHASE I BID | | |
| | | | | | |
| | | | | | |
| | | | | | |
| | | | | | |
| | | | | | |
| | | | | | |
| | | | | | |
| | | | | | |



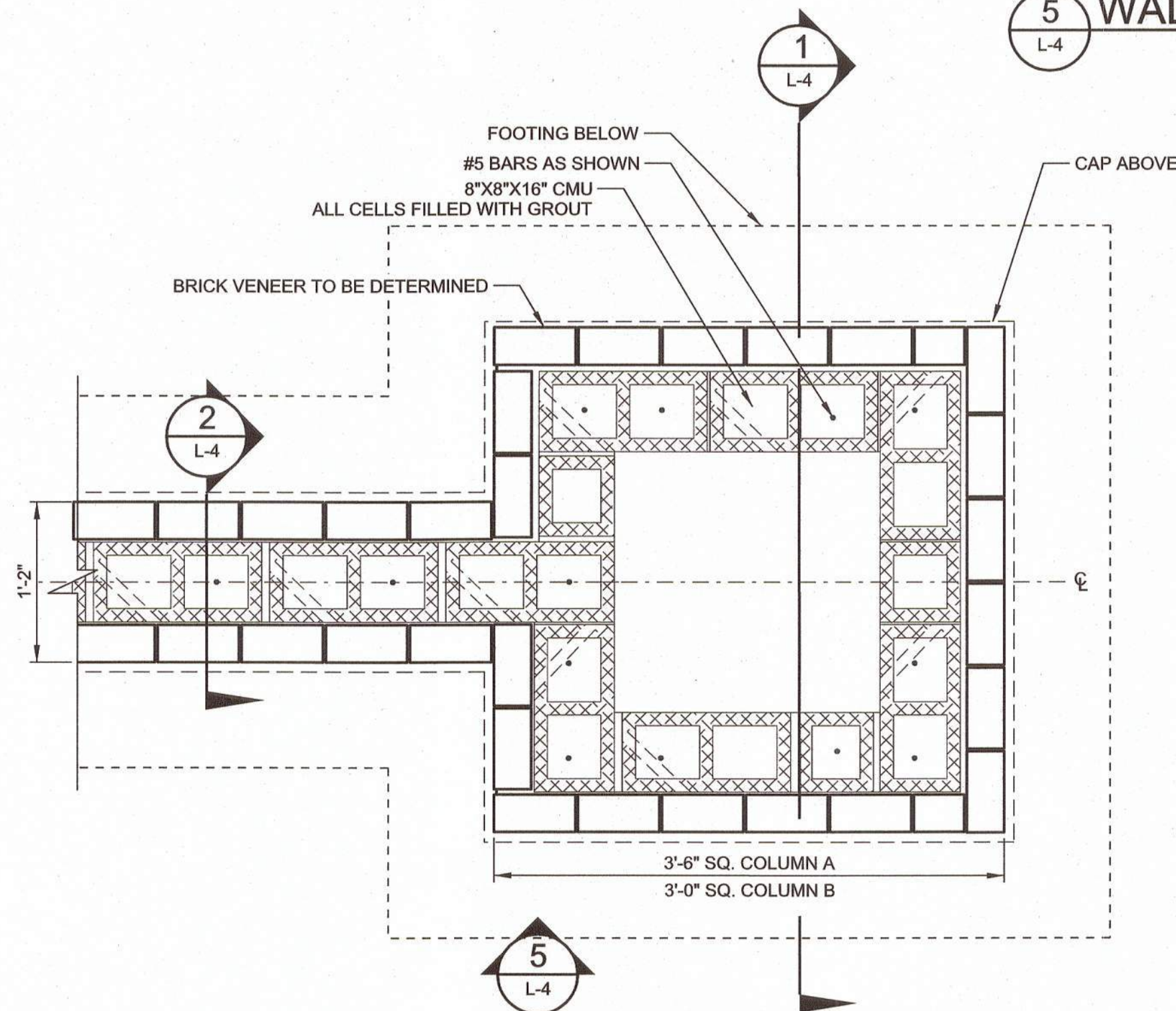
1 COLUMN CROSS-SECTION DETAIL
L-4 SCALE: 1"=1'



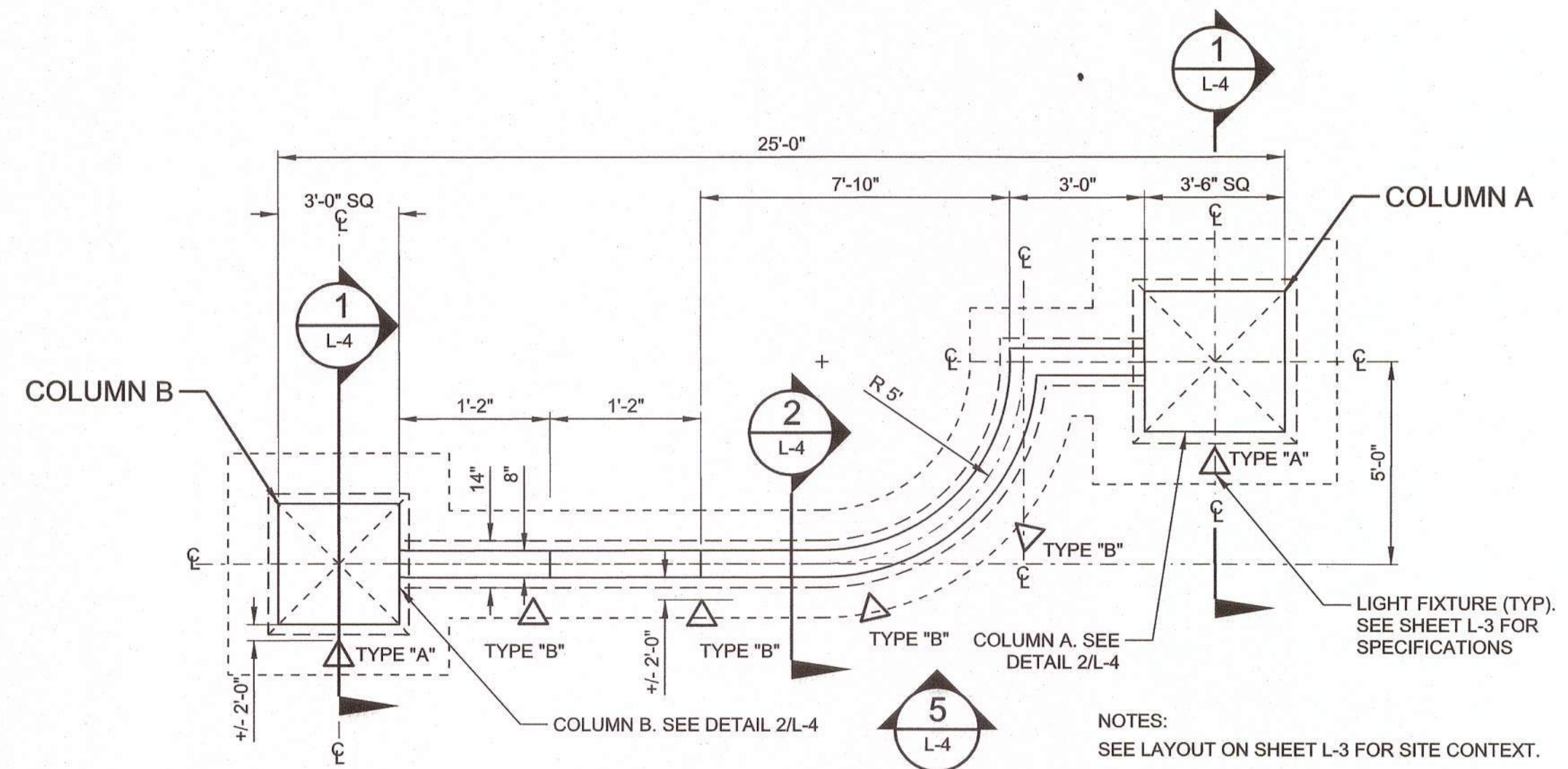
5 WALL ELEVATION VIEW
L-4



2 MONUMENT WALL CROSS-SECTION DETAIL
L-4 SCALE: 1"=1'-0"



3 COLUMN W/ WALL CROSS-SECTION DETAIL
L-4 SCALE: NTS



4 MONUMENT SIGN ENLARGEMENT PLAN
L-4 SCALE: 3/4"=1'

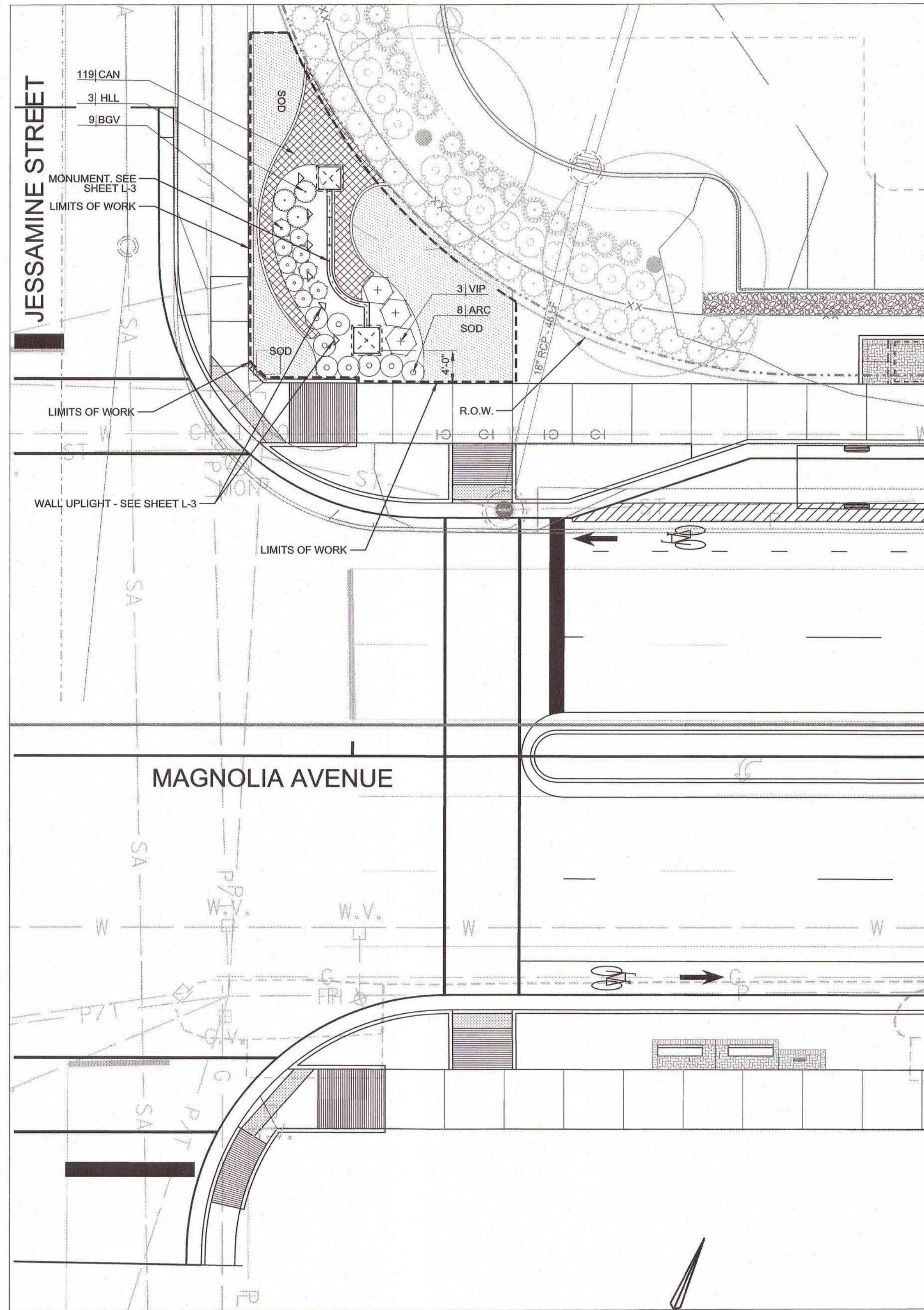


CITY OF KNOXVILLE
OFFICE OF REDEVELOPMENT

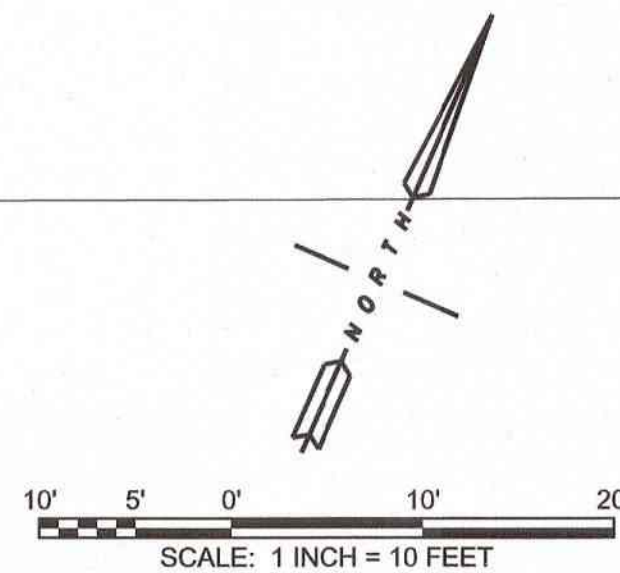
DETAILS AND SPECIFICATIONS

GATEWAY MONUMENT AT
MAGNOLIA AVENUE &
JESSAMINE STREET

DRAWN: DKN
DESIGNED: JBS
DATE: 07-24-2018
CHECKED: JBS
APPROVED: COT



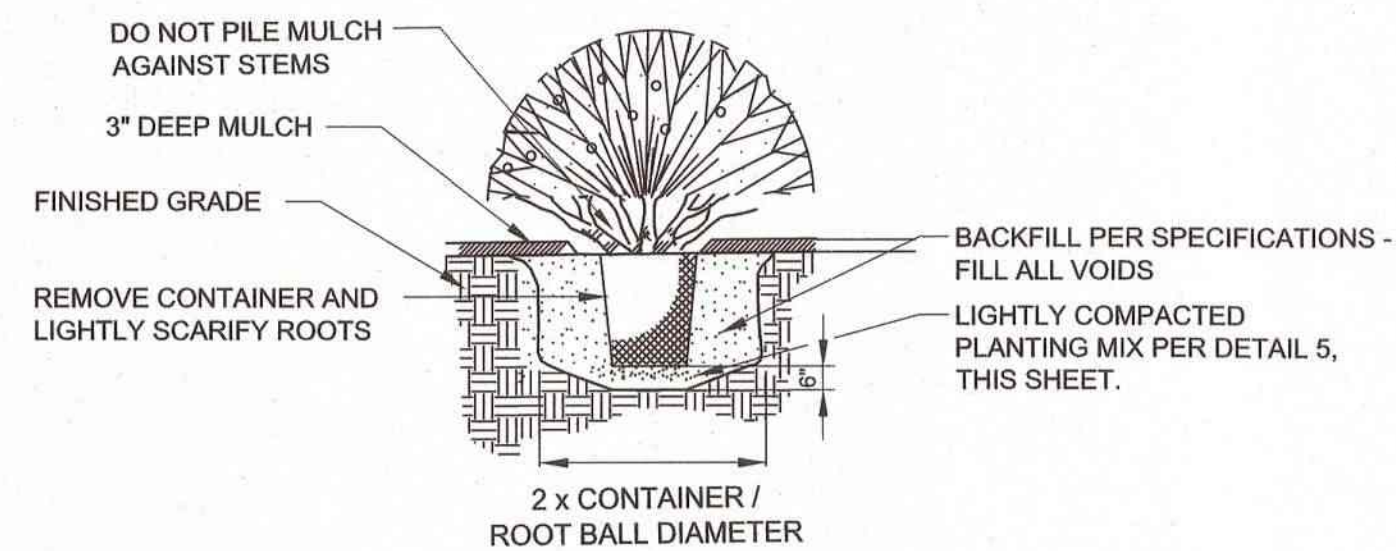
1 MONUMENT SIGN PLANTING PLAN
L-5



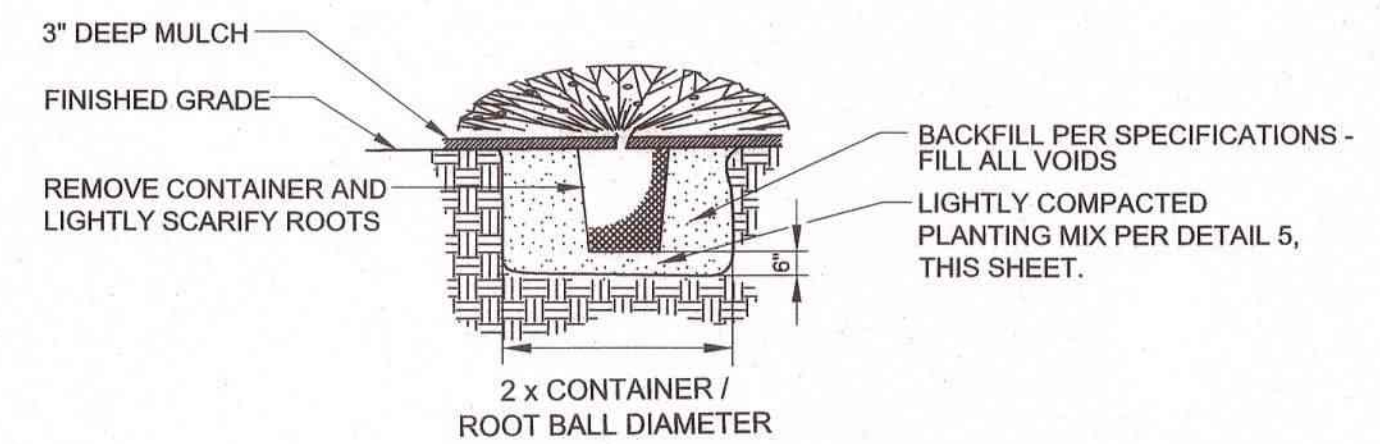
| PLANT SCHEDULE | | | | | | |
|----------------------------------|--------|------------------------------------|-------------------------------|----------------------|-----------|----------|
| SHRUBS | | | | | | |
| | QTY | BOTANICAL NAME | COMMON NAME | CONDITION | SPACING | |
| ARC | 9 | Abelia x grandiflora 'Rose Creek' | Rose Creek Abelia | 3 gal | 36" O.C. | |
| BGV | 7 | Buxus x 'Green Velvet' | Boxwood | 3 gal | 30" O.C. | |
| HLL | 3 | Hydrangea paniculata 'Little Lime' | Little Lime Hydrangea | 3 gal | 36" O.C. | |
| VIP | 3 | Viburnum x pragnese | Prague Viburnum | 3 gal | 4" O.C. | |
| | | | | | | |
| GROUND COVERS/ HERBS/ PERENNIALS | | QTY | BOTANICAL NAME | COMMON NAME | CONDITION | SPACING |
| CAN | 119 | | Coreopsis auriculata 'Nana' | Mouse-Eared Tickseed | 4" Pot | 15" O.C. |
| | | | | | | |
| SOD/SEED | | QTY | BOTANICAL NAME | COMMON NAME | CONDITION | SPACING |
| SOD | 524 sf | | Cynodon dactylon 'Tifway 419' | T-419 Bermuda Grass | sod | N/A |
| MULCH | - | | Shredded Hardwood | - | - | N/A |

NOTE: ALL PLANT MATERIAL IS TO BE FULL, WELL ROOTED IN POT, AND MATCHED.

2 GATEWAY MONUMENT SIGN PLANT SCHEDULE
L-5



3 TYPICAL SHRUB PLANTING DETAIL
L-5 1/4"=1'-0"



4 TYPICAL GROUNDCOVER PLANTING DETAIL
L-5 1/4"=1'-0"

| ROW SPACING (A) | PLANT SPACING (B) | OFFSET DIST. (1/2 B) |
|-----------------|-------------------|----------------------|
| 6" O.C. | 6" O.C. | 3" |
| 8" O.C. | 8" O.C. | 4" |
| 10" O.C. | 10" O.C. | 5" |
| 12" O.C. | 12" O.C. | 6" |
| 15" O.C. | 15" O.C. | 7.5" |
| 18" O.C. | 18" O.C. | 9" |
| 24" O.C. | 24" O.C. | 12" |
| 30" O.C. | 30" O.C. | 15" |
| 36" O.C. | 36" O.C. | 18" |
| 42" O.C. | 42" O.C. | 21" |
| 48" O.C. | 48" O.C. | 24" |

ROW SPACING A TO EQUAL PLANT SPACING B TO CREATE EQUILATERAL TRIANGLE. SPACING B TO BEGIN OFFSET AT HALF DISTANCE.

OFFSET DIST. EQUAL TO 1/2 SPACING B

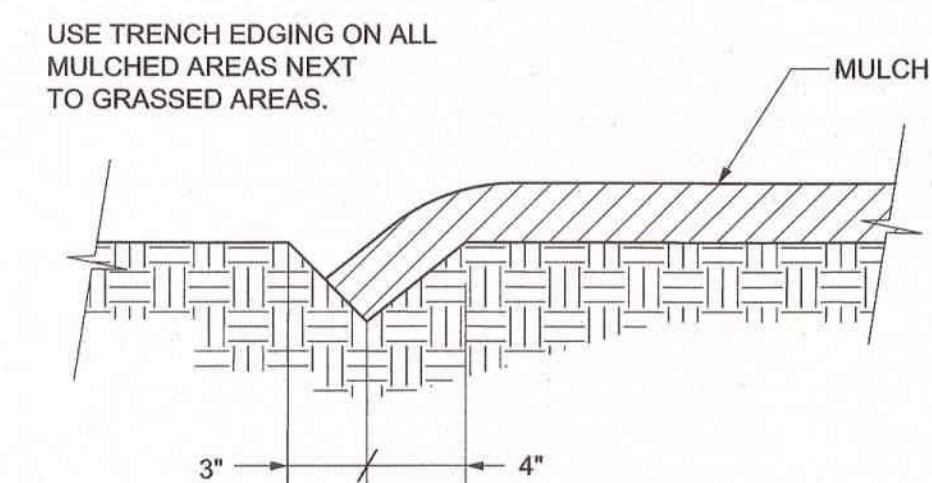
SPACING A

SPACING B

SHRUBS / GROUNDCOVER PLANTS

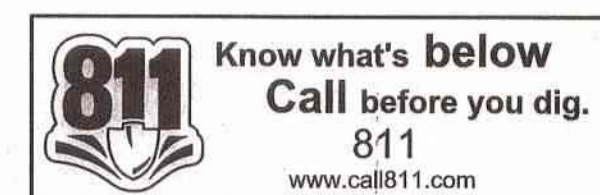
TRIANGLE / OFFSET SPACING

5 TYPICAL PLANT SPACING DETAIL
L-5 NTS



6 TYPICAL TRENCH EDGING DETAIL
L-5 NTS

| | | | |
|-------------|----------|-----------|-------------------|
| PROJECT No. | YEAR | SHEET No. | |
| 18A-C-0663 | 2018 | L-5 | |
| REVISIONS | | | |
| No. | DATE | BY | BRIEF DESCRIPTION |
| 0 | 07-24-18 | DKN | ISSUED FOR BID |
| | | | |
| | | | |
| | | | |
| | | | |
| | | | |
| | | | |
| | | | |
| | | | |



| | |
|--|--|
| CITY OF KNOXVILLE OFFICE OF REDEVELOPMENT | DRAWN: DKN DESIGNED: JBS DATE: 07-24-2018 CHECKED: JBS APPROVED: COT |
| LANDSCAPE PLAN GATEWAY MONUMENT AT MAGNOLIA AVENUE & JESSAMINE STREET | |